



ATHLEAD

FOR THE SPORTS LEADER

**CRICKET**  
**TEAM WEAR**  
CATALOGUE

# CONTENTS PAGE

**05**  
ABOUT US

**08**  
PLAYING TOP

**16**  
PLAYING PANTS

**20**  
PLAYING HATS

**26**  
TRAINING RANGE

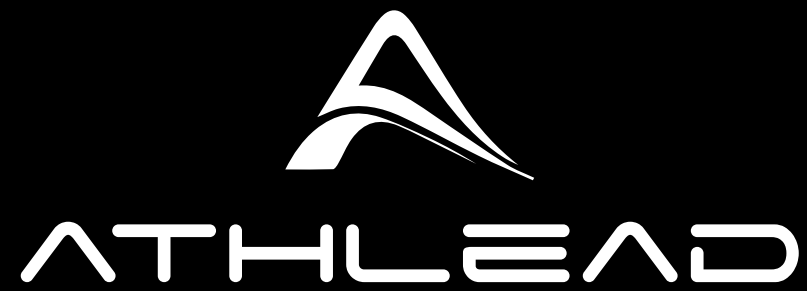
**36**  
WINTER RANGE

**42**  
DESIGN TEMPLATES

**48**  
EMBELLISHMENTS

**56**  
FABRICS

**60**  
SIZE GUIDES



## MISSION

To provide a seamless cost effective merchandising and apparel solution to our customs.



## VALUES

Customer Focused  
Community Focused  
Innovative  
Dependable



## VISION

To be Australia's No. 1 for customer satisfaction of teamwear in Australia.

## ABOUT US

---

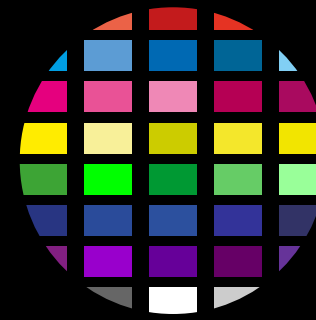
Athlead are a leading sports apparel and equipment provider in Australia. We strive to supply high-quality sporting apparel and equipment at a competitive price, with a focus on delivering an exceptional customer experience for all sporting clubs, associations and businesses. We are able to provide you with leading technologies, from sublimation to the ever-reliable embroidery; as well as new technologies, including digital transfer and digital prints.

FOLLOW US:



# CUSTOMISABLE GEAR

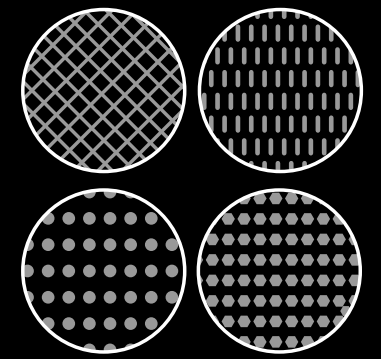
---



**VARIOUS COLOUR PATTERNS**



**LIMITLESS DESIGNS**



**DIVERSE FABRIC SELECTIONS**

## OUR DESIGN PROCESS

### SELECT

To get the process started, simply select your desired products from our extensive range. Athlead can customise your sporting apparel needs, regardless of the sport you play or support.

### QUOTE AND APPROVAL

Our sales team will work to prepare a quote based on quantity and sizing requirements. All our quotes are provided electronically for review and digital acceptance.

### DESIGN

Once we receive your accepted quote, share with us your ideas to create the apparel that is For The Sports Leader. Our talented design team will then prepare a concept for your approval. During our design process, we welcome unlimited revisions to ensure maximum customer satisfaction.

### ORDER

Once the design has been approved, the order is placed with our talented supply chain. You will then receive an email to confirm your order and expected delivery time frame.

At this time you will also receive your invoice for payment prior to dispatch.


### RECEIVE

Using our trusted logistics partners, we ship your items direct to your door.

We have an Official Apparel Supplier (OAS) program, which is offered to a variety of sporting organisations around Australia. Through this program, Athlead would exclusively supply all your sporting apparel and in return, we would pay you a sponsorship based on your annual spend with us.

At Athlead we want to ensure you have the best experience possible.

To commence your design process or to provide feedback, please feel free to contact us and one of our friendly team members will be in touch with you.

 02 6181 0209

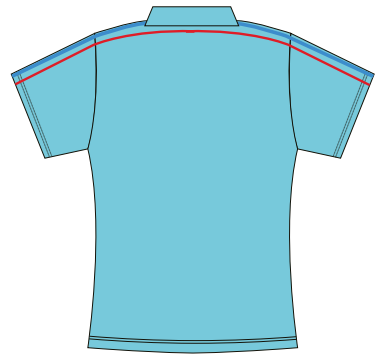
 [sales@athlead.com.au](mailto:sales@athlead.com.au)

 [athlead.com.au](http://athlead.com.au)

# PLAYING TOP

## PLAYING SHIRT

(SHORT SLEEVE)



## CUTS

MENS

WOMENS

KIDS



## SIZES

XS-5XL

MENS

6-22

WOMENS

4-16

KIDS

## FABRICS

- POLYESTER
- COTTON

## PLAYING SHIRT

(LONG SLEEVE)



### CUTS

MENS

WOMENS

KIDS



### SIZES

XS-5XL

MENS

6-22

WOMENS

4-16

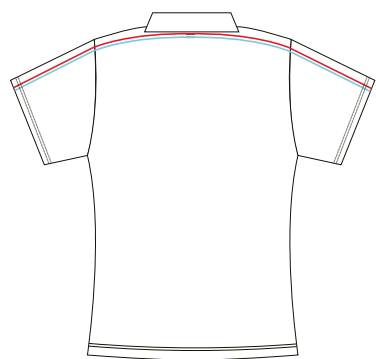
KIDS

### FABRICS

- POLYESTER
- COTTON

## WHITE PLAYING SHIRT

(SHORT SLEEVE)



### CUTS

MENS

WOMENS

KIDS



### SIZES

XS-5XL

MENS

6-22

WOMENS

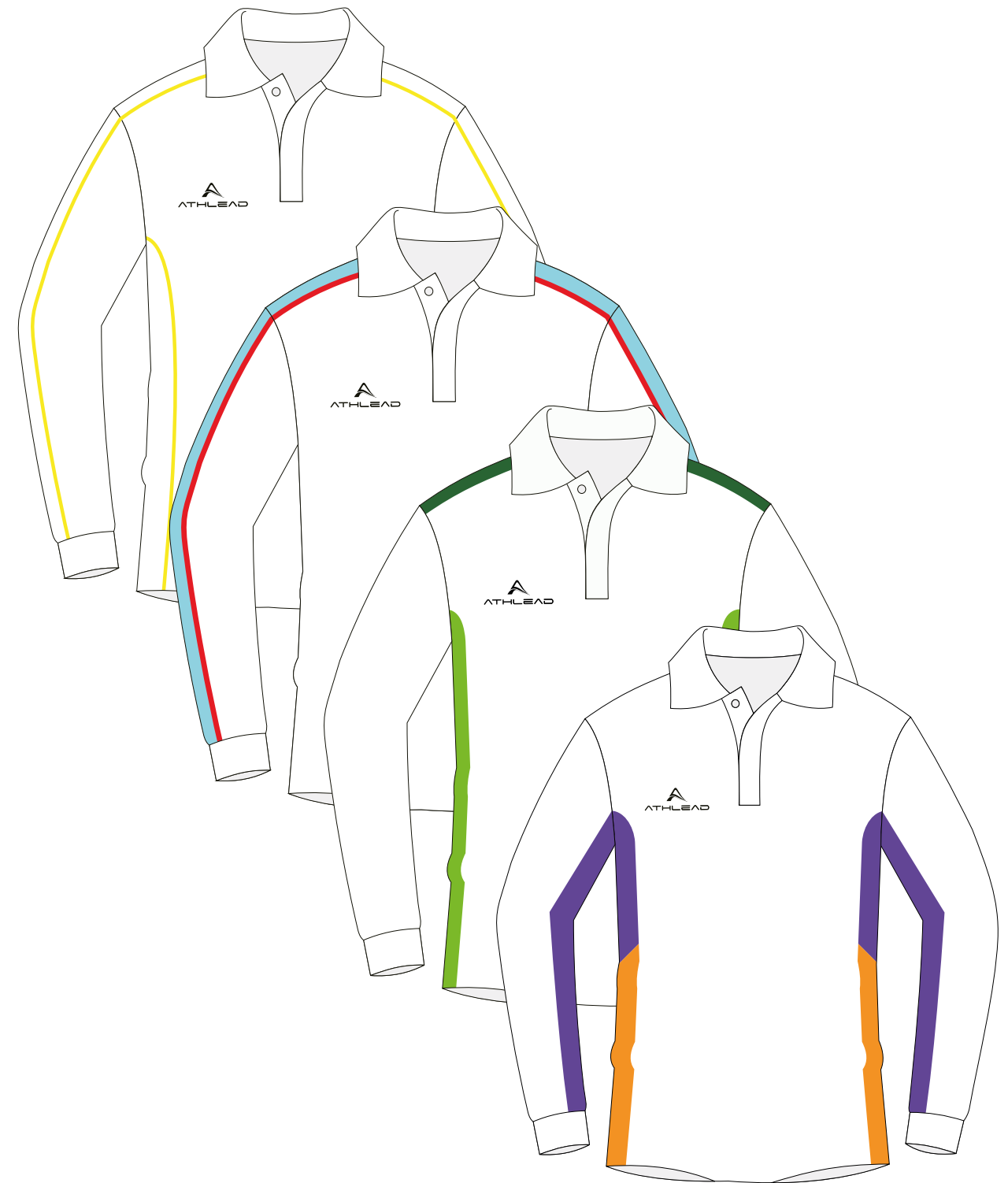
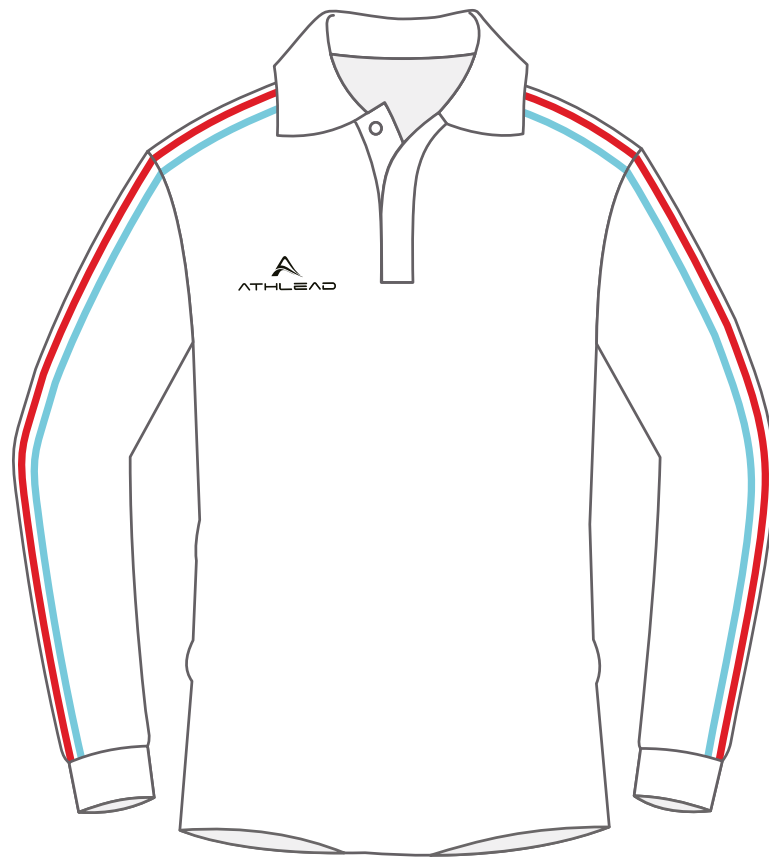
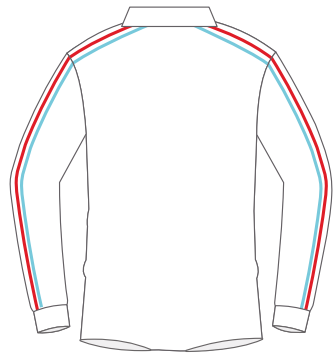
4-16

KIDS

### FABRICS

- POLYESTER
- COTTON

**WHITE PLAYING SHIRT**  
(LONG SLEEVE)



**CUTS**

MENS

WOMENS

KIDS



**SIZES**

XS-5XL

MENS

6-22

WOMENS

4-16

KIDS

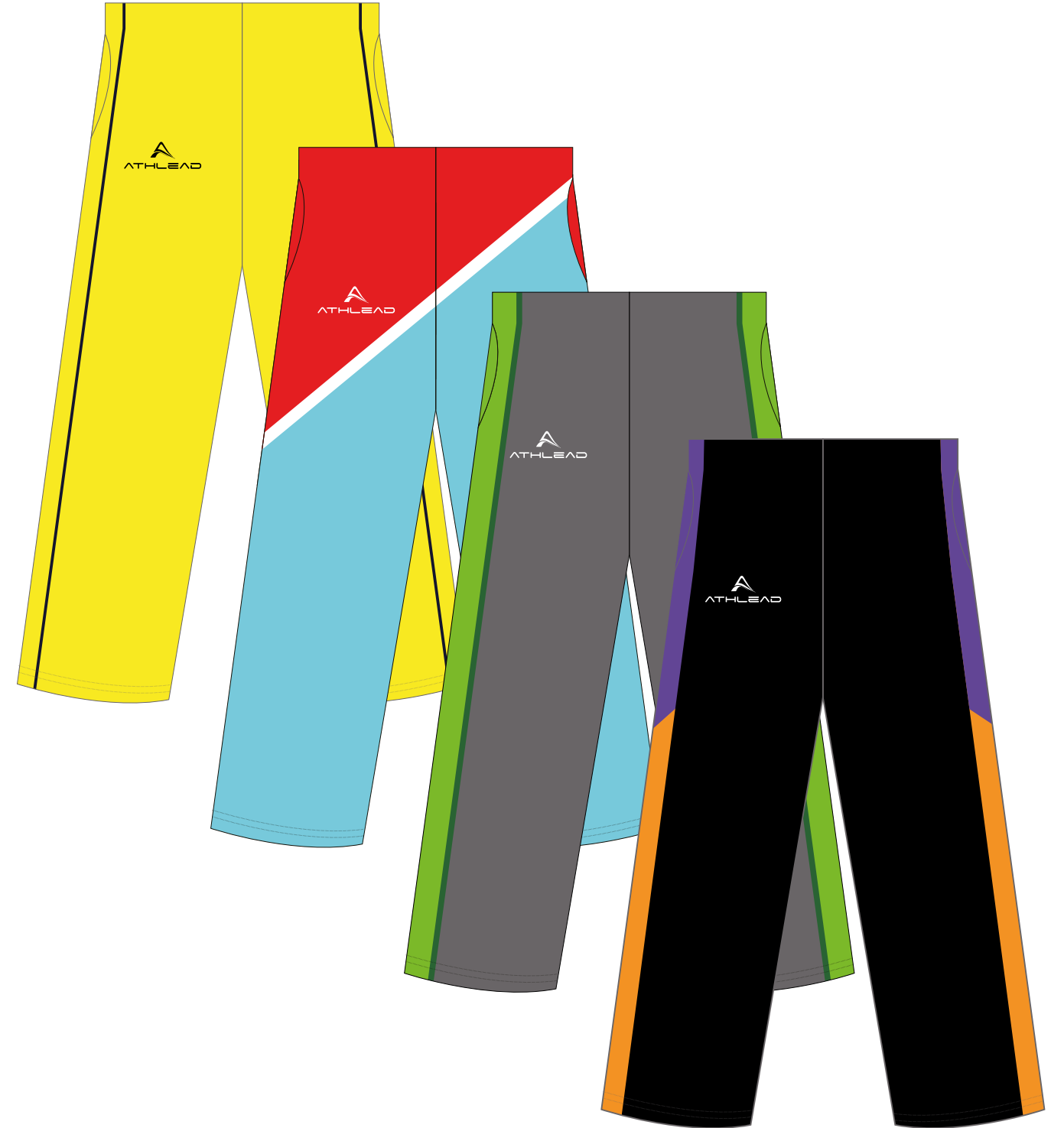
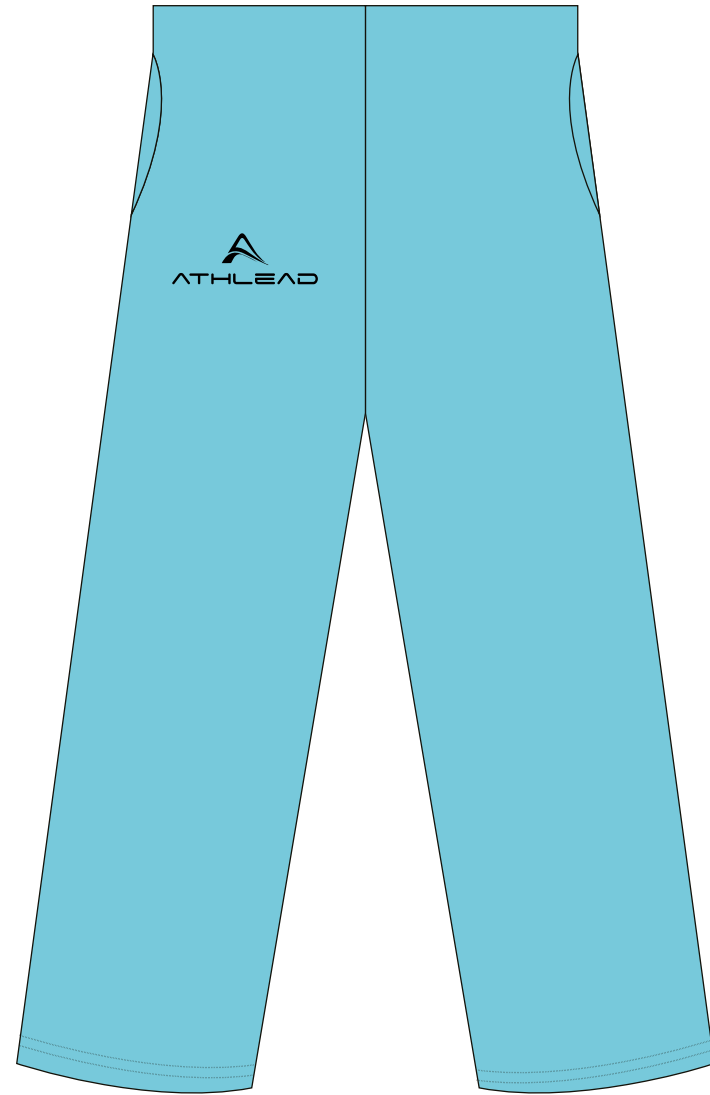
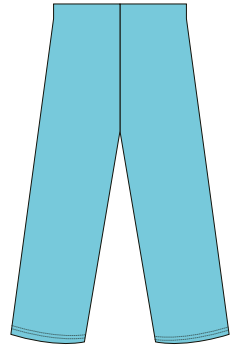
**FABRICS**

- POLYESTER
- COTTON



# PLAYING PANTS

## CRICKET PANTS



### CUTS

MENS

WOMENS

KIDS



### SIZES

XS-5XL

MENS

6-20

WOMENS

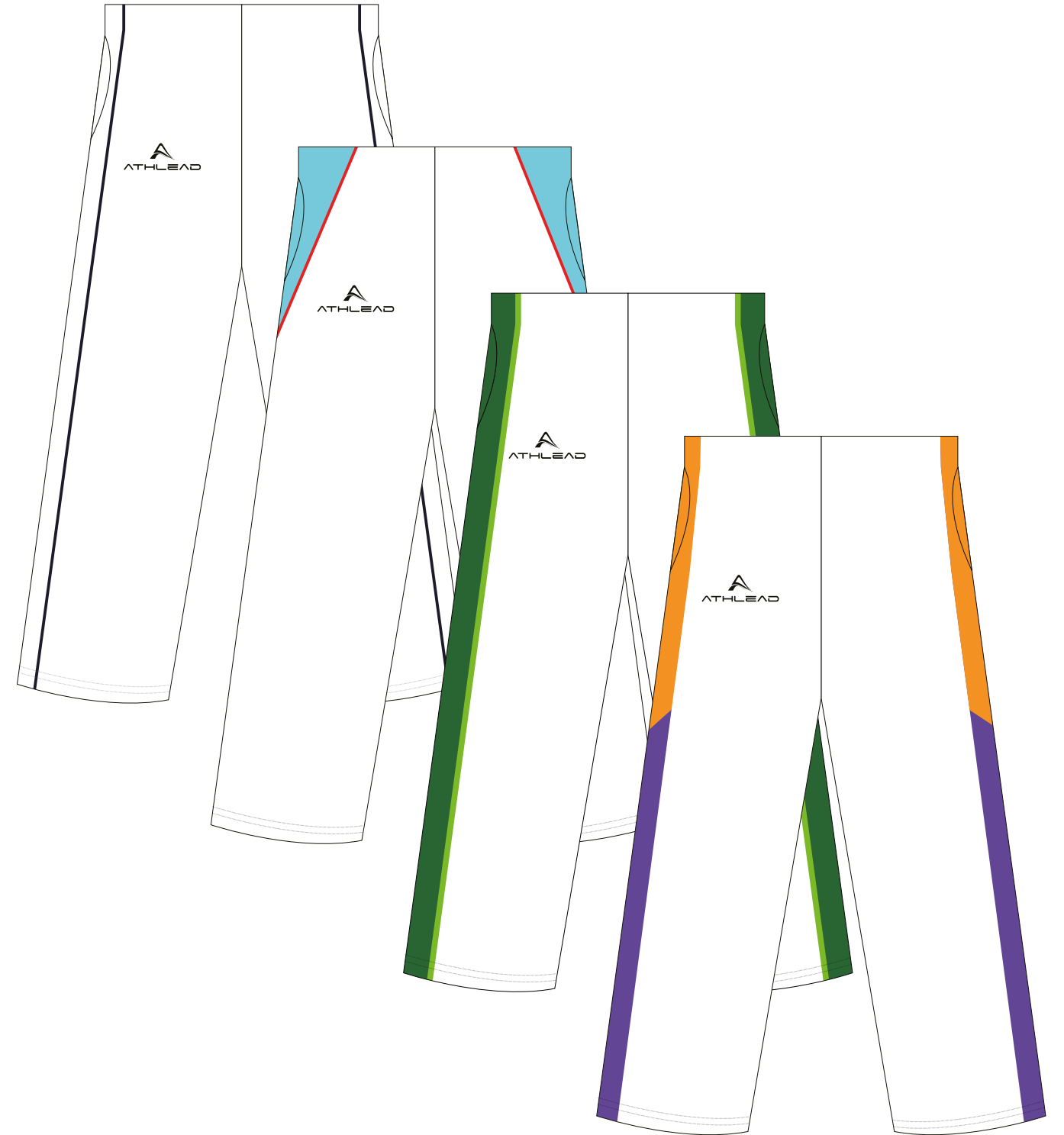
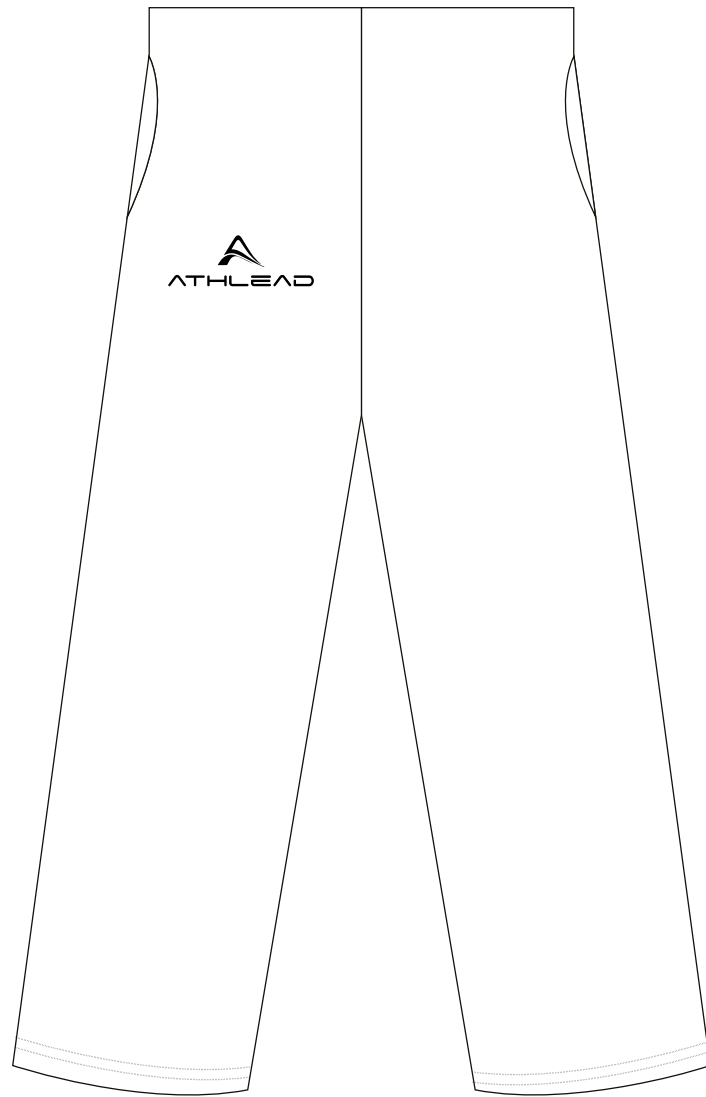
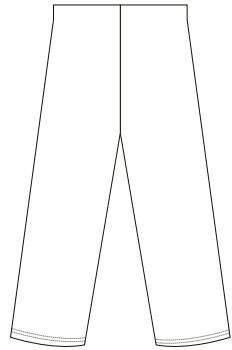
4-16

KIDS

### FABRICS

- POLYESTER
- COTTON

WHITE CRICKET PANTS



CUTS

MENS

WOMENS

KIDS



SIZES

XS-5XL

MENS

6-20

WOMENS

4-16

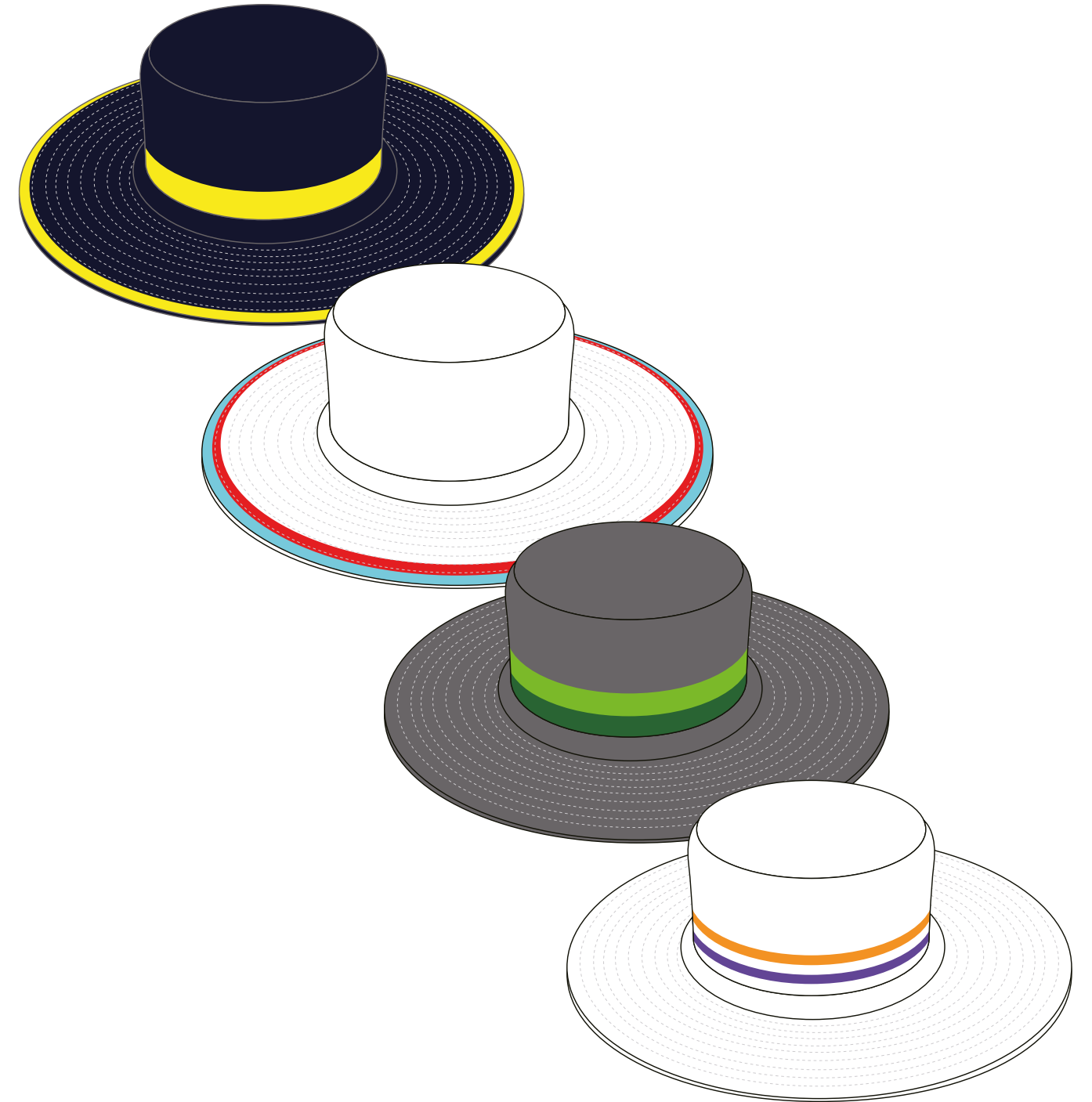
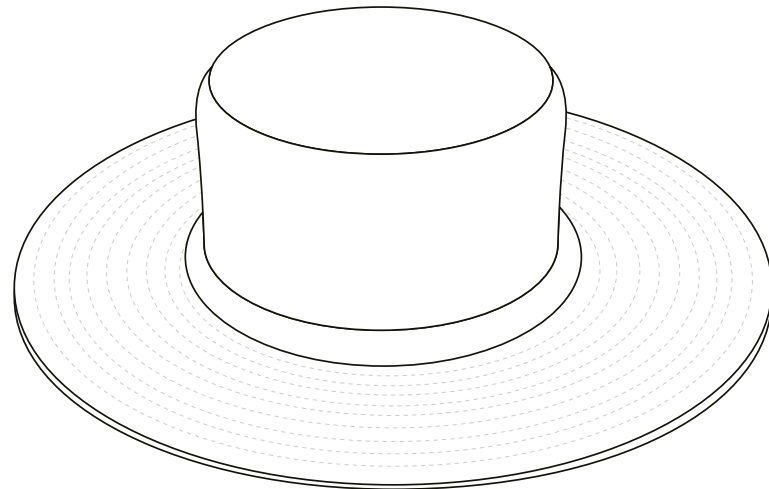
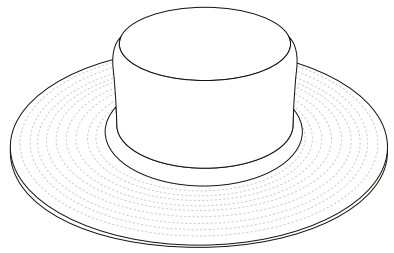
KIDS

FABRICS

- POLYESTER
- COTTON

# PLAYING HATS

## WIDE BRIM HAT



### CUTS

MENS

KIDS



### SIZES

OSFM

MENS

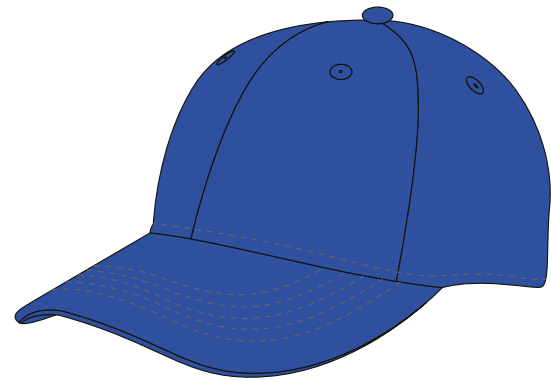
OSFM

KIDS

### FABRICS

- POLYESTER
- COTTON

# CAP



## CUTS

MENS

KIDS



## SIZES

OSFM

MENS

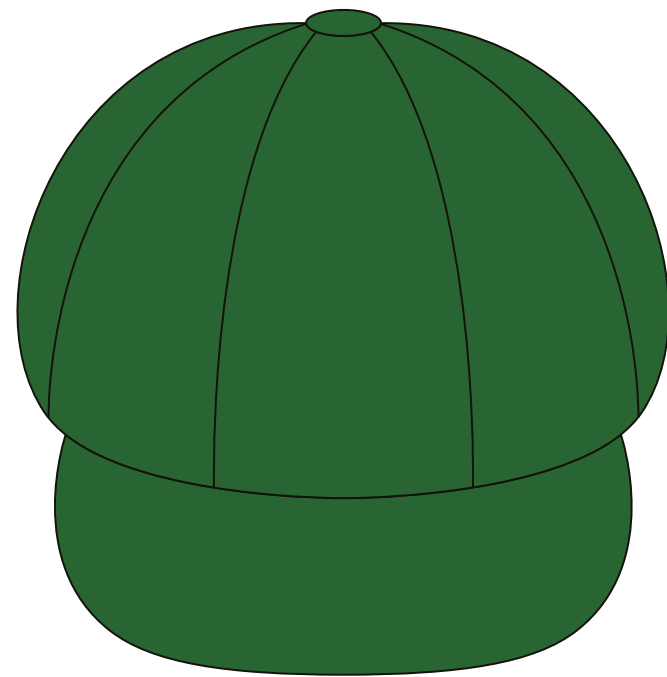
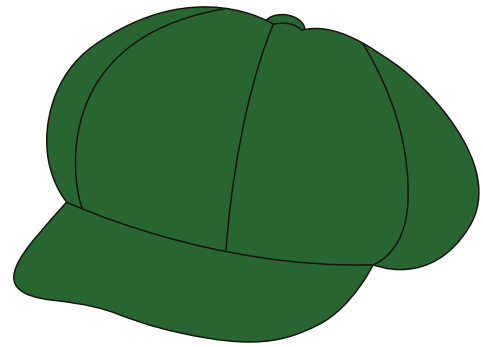
OSFM

KIDS

## FABRICS

- POLYESTER
- COTTON

**BAGGY HAT**



**CUTS**

MENS

KIDS



**SIZES**

OSFM

MENS

OSFM

KIDS

**FABRICS**

- POLYESTER
- COTTON

# TRAINING RANGE

## TEE SHIRT



### CUTS

MENS

WOMENS

KIDS



### SIZES

XS-5XL

MENS

6-22

WOMENS

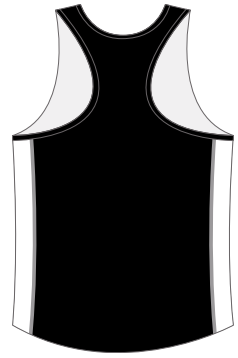
4-16

KIDS

### FABRICS

- POLYESTER
- COTTON
- SPANDEX

## ATHLETIC SINGLET



### CUTS

MENS

WOMENS



### SIZES

XS-5XL

MENS

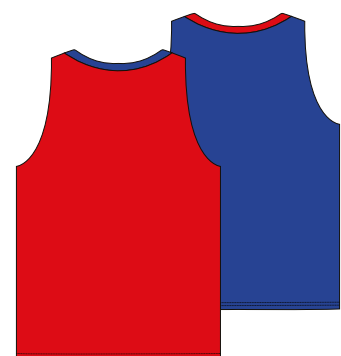
6-22

WOMENS

### FABRICS

- POLYESTER
- ELASTANE
- SPANDEX

## REVERSIBLE SINGLET



### CUTS

MENS

WOMENS

KIDS



### SIZES

XS-5XL

MENS

6-22

WOMENS

4-16

KIDS

### FABRICS

- POLYESTER
- ELASTANE
- SPANDEX



# TRAINING SHORTS



## CUTS

MENS

WOMENS

KIDS



## SIZES

XS-5XL

MENS

6-22

WOMENS

4-16

KIDS

## FABRICS

- POLYESTER
- ELASTANE
- SPANDEX

LONG SLEEVE SHIRT



CUTS

MENS

WOMENS

KIDS



SIZES

XS-5XL

MENS

6-22

WOMENS

4-16

KIDS

FABRICS

- POLYESTER
- COTTON
- SPANDEX

# WINTER RANGE

## PULLOVER HOODIE



### CUTS

MENS  
KIDS



### SIZES

XS-5XL  
4-16

MENS  
KIDS

### FABRICS

- POLYESTER
- COTTON

## SPRAY JACKET



### CUTS

MENS  
KIDS



### SIZES

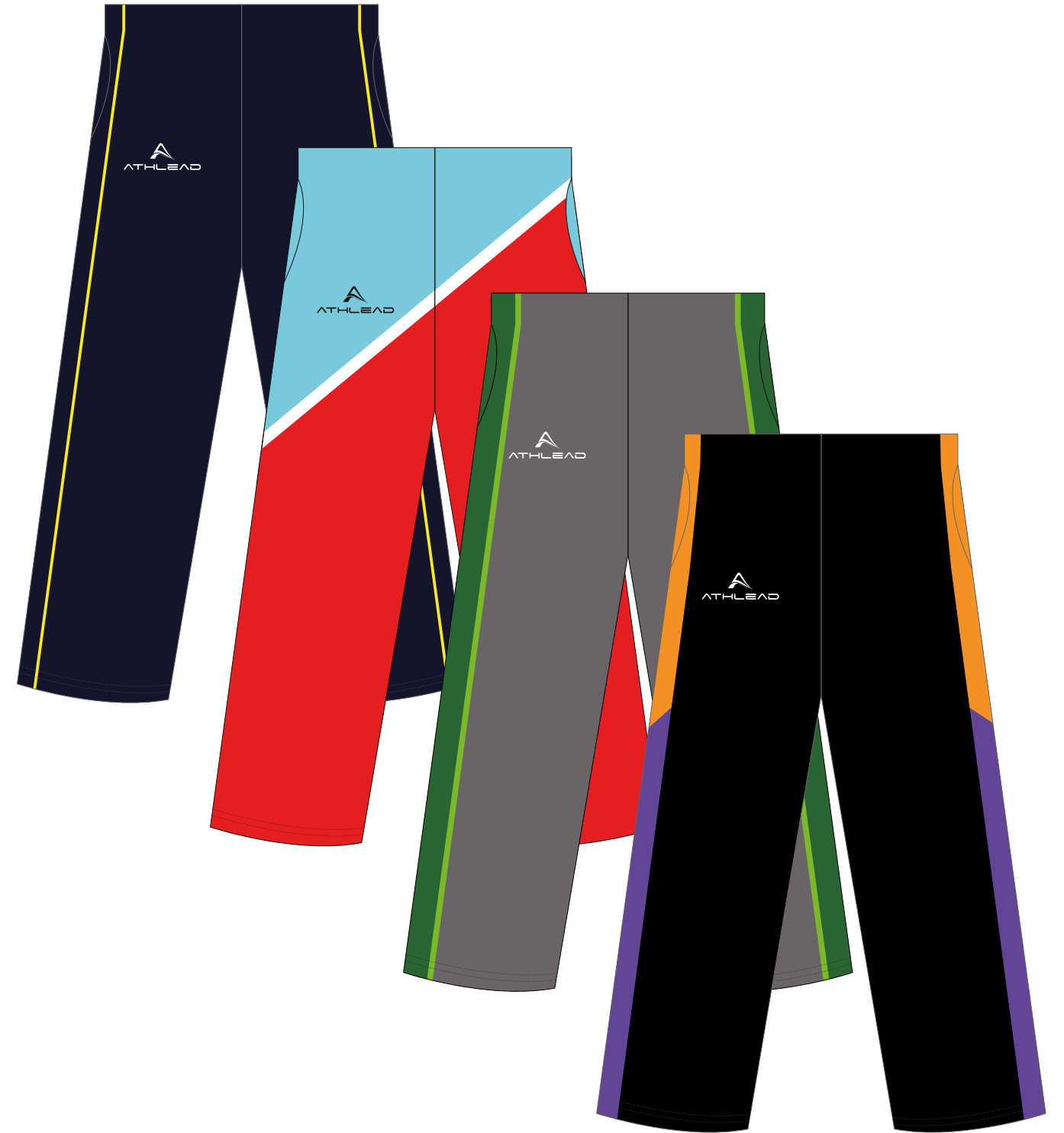
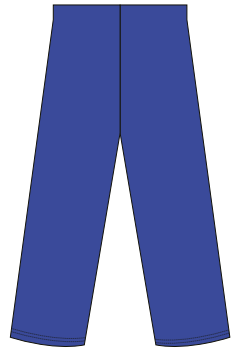
XS-5XL  
4-16

MENS  
KIDS

### FABRICS

- POLYESTER

TRACKSUIT PANTS



CUTS

MENS

KIDS



SIZES

XS-5XL

4-16

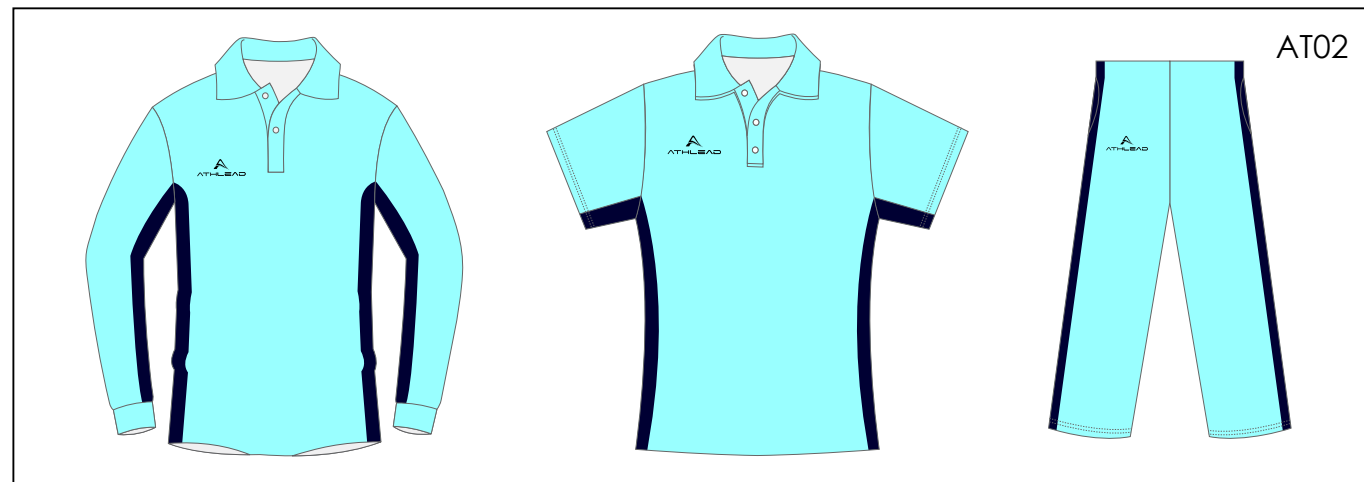
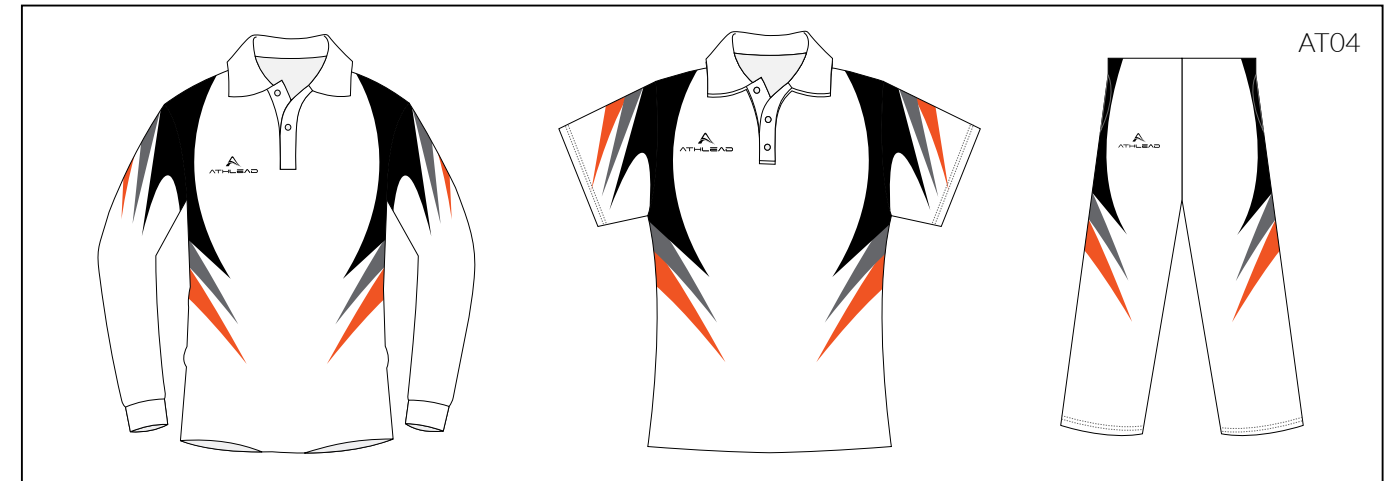
MENS

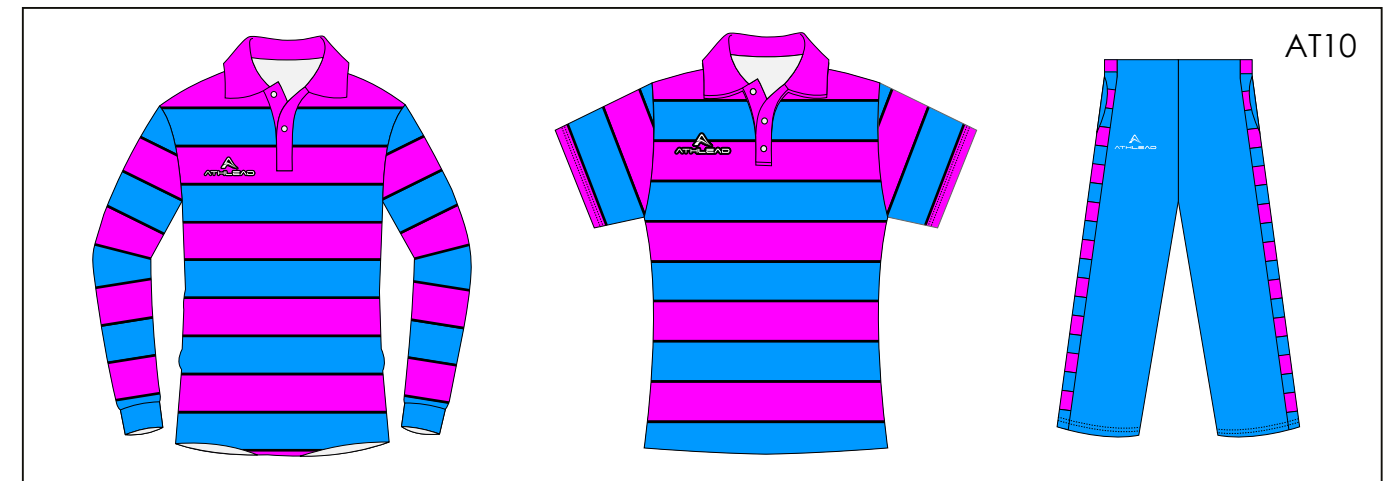
KIDS

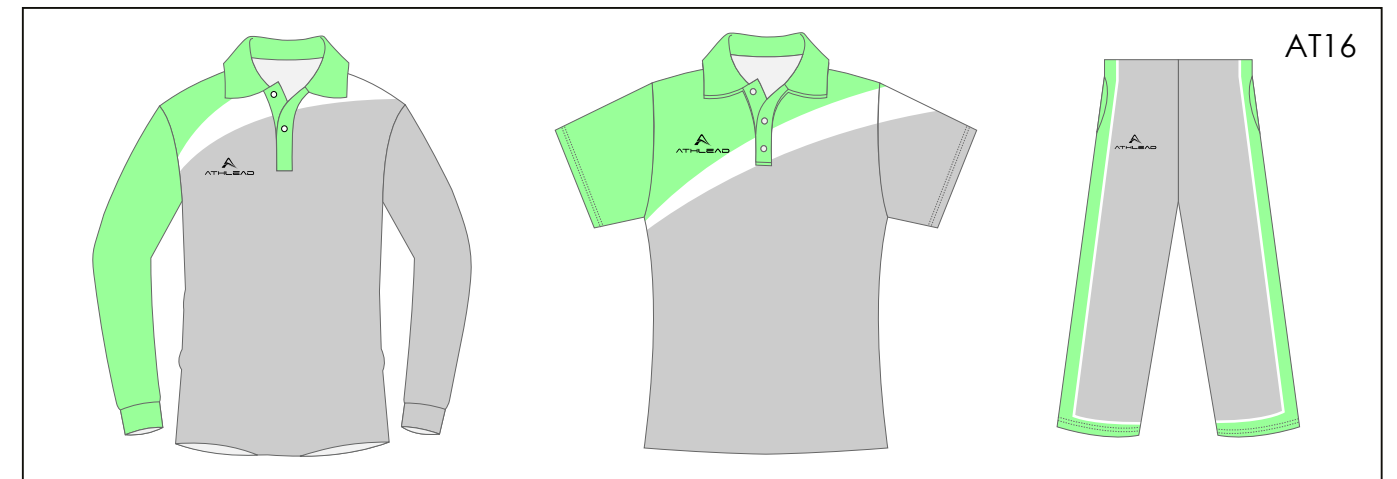
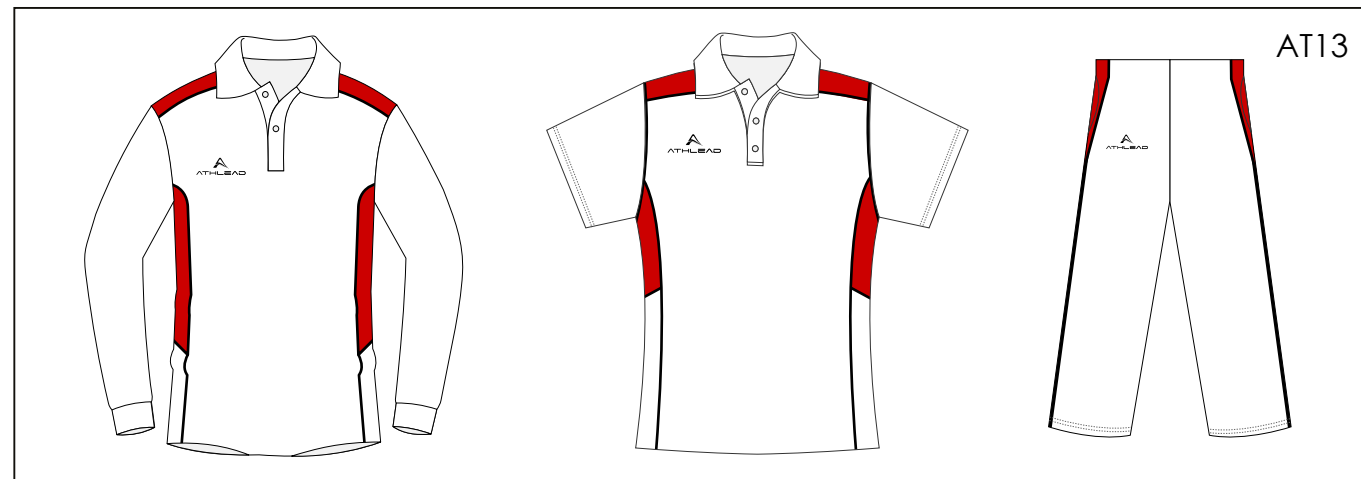
FABRICS

- POLYESTER
- COTTON

# DESIGN TEMPLATES





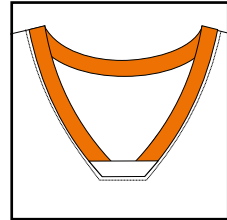


**i** Couldn't find the design you were after? Please feel free to contact us and our team will then prepare custom designs for your approval.

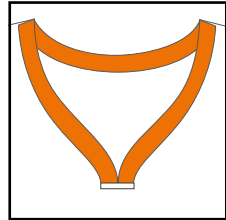


# EMBELLISHMENTS

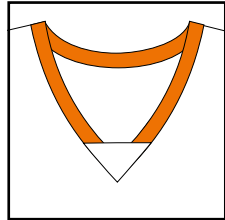
## COLLAR TYPES



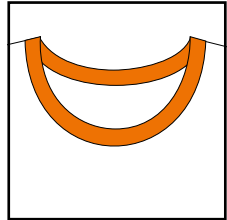
COLLAR #1



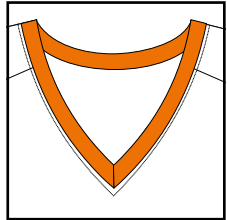
COLLAR #2



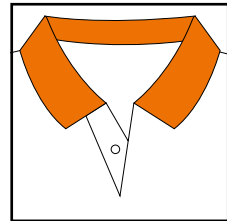
COLLAR #3



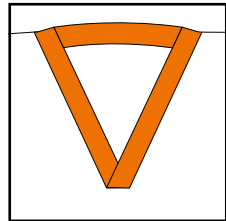
COLLAR #4



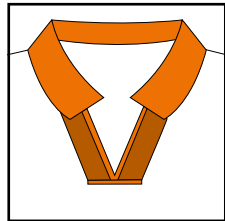
COLLAR #5



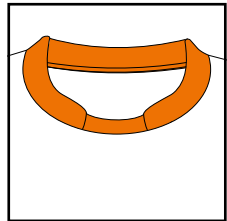
COLLAR #6



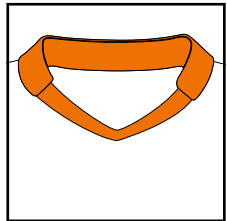
COLLAR #7



COLLAR #8



COLLAR #9



COLLAR #10

## NAME



TOP



BOTTOM

## NUMBERING



**25** 25

Impact

**25** 25

College

**25** 25

Curve

**25** 25

Athletic

**25** 25

Clean

**25** 25

Square



ARCHED



WITH NUMBER

## TEAM LOGO

Front - Left Chest



Front - Right Chest



Front - Stomach



Side - Left Sleeve



Side - Right Sleeve



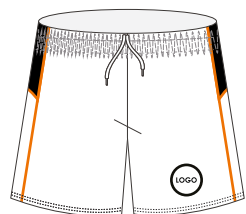
Back - Top



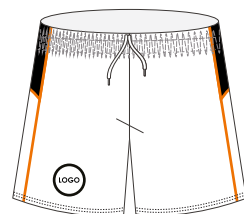
Back - Bottom



Front - Left Thigh



Front - Right Thigh



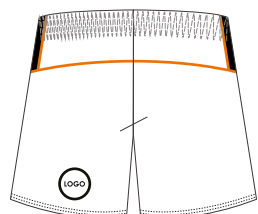
Side - Left Thigh



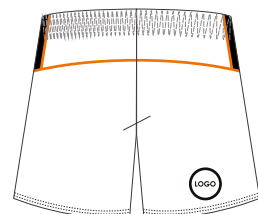
Side - Right Thigh



Back - Left Thigh



Back - Right Thigh



## ATHLEAD LOGO

Front - Left Chest



Front - Right Chest



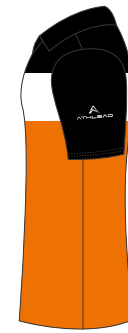
Front - Centre Neck



Back - Top



Side - Left Sleeve



Side - Right Sleeve



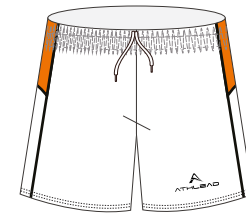
Front - Left Shoulder



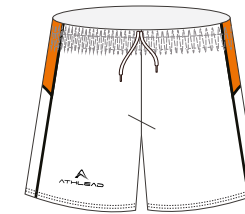
Front - Right Shoulder



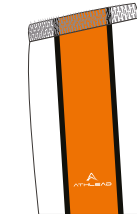
Front - Left Thigh



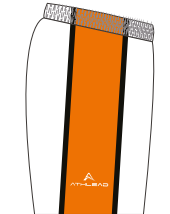
Front - Right Thigh



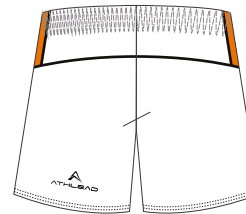
Side - Left Thigh



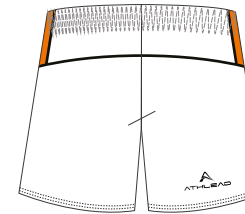
Side - Right Thigh



Back - Left Thigh



Back - Right Thigh



# CUTS

## SHIRTS, JACKETS, AND HOODIES

Fitted



Raglan



## ATHLETIC SINGLETS

Razer

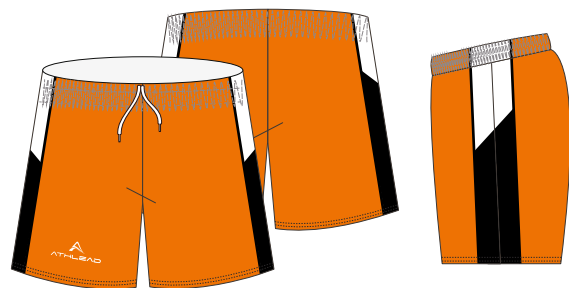


Straight

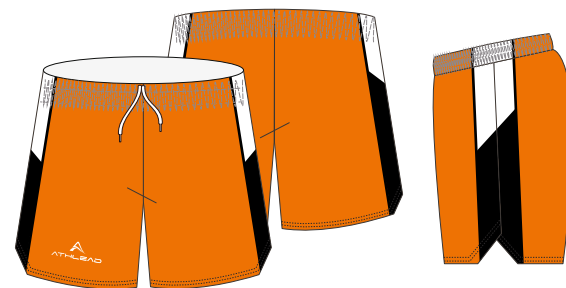


## SHORTS

Standard



Elite



## REVERSIBLE SINGLETS

Standard  
Collar #1-5 only



Performance (Female only)  
No Collar Alterations



Athletic  
No Collar Alterations



## TEMPLATE ALTERATIONS

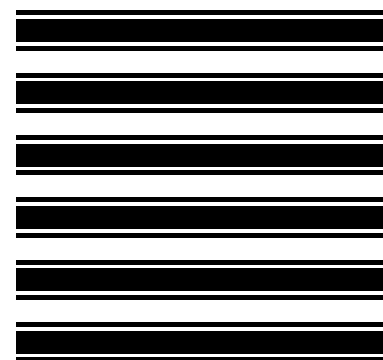
### PATTERN INTEGRATION

Select a template



AT02

Provide a pattern



### TEMPLATE COMBINATION

Combine features from different templates



AT10



AT11



## SUBLIMATED FABRIC SWATCH

### INTERLOCK

150 GSM  
100% Polyester  
Suitable for T-shirt/Polo shirt/  
Singlet/Shorts

### INTERLOCK

260 GSM  
100% Polyester  
Suitable for AFL/Rugby

### INTERLOCK BRUSHED BACK

210 GSM  
100% Polyester  
Suitable for Hoodie/Zip-up hoodie/  
Tracksuit

### INTERLOCK BRUSHED BACK

320 GSM  
100% Polyester  
Suitable for Hoodie/Zip-up hoodie/  
Jacket/Pants

### SOFTSHELL

280 GSM  
100% Polyester  
Keep warm, primarily used Softshell  
jacket

### TAFFETA

100% Polyester  
Waterproof. Primarily used for  
Lightweight jacket

### MICROFIBRE

130 GSM  
100% Polyester  
Suitable for Tracksuit

### MICROMESH

165 GSM  
100% Polyester  
Suitable for T-shirt/Polo shirt/Singlet/  
Shorts/Basketball/Cycling/Cricket/  
Netball dress

### MINI WAFFLE

150 GSM  
100% Polyester  
Suitable for T-shirt/Polo shirt/Singlet/  
Shorts/Basketball/Cycling

### MINI WAFFLE

160 GSM  
100% Polyester  
Suitable for T-shirt/Polo shirt/Singlet/  
Shorts/Basketball/Cycling/Cricket/  
Netball dress

### MINI WAFFLE KNIT

145 GSM  
100% Polyester  
Suitable for T-shirt/Polo shirt/Singlet/  
Shorts/Basketball/Soccer/  
Cycling/Cricket/Netball dress

### BIRDSEYE MESH

135 GSM  
92% Polyester 8% Elastane  
Suitable for T-shirt/Polo shirt/Singlet/  
Shorts/Reversible basketball singlet

### POLYESTER DIAMOND KNIT

135 GSM  
100% Polyester  
Suitable for T-shirt/Polo shirt/Golf  
polo/Singlet

### POLYESTER STRIP KNIT

150 GSM  
100% Polyester  
Suitable for T-shirt/Polo shirt/Singlet/  
Shorts/Basketball/Soccer/Cycling/  
Cricket/Netball dress

### POLY/ESTANE AIR MESH

180 GSM  
92% Polyester 8% Elastane  
Suitable for T-shirt/Polo shirt/Singlet/  
Shorts/Soccer/Basketball

### POLY/ESTANE

240 GSM  
88% Polyester 12% Elastane  
Suitable for Leggings/Cycling

### POLY/SPANDEX JERSEY

200 GSM  
88% Polyester 12% Spandex  
Suitable for T-shirt/Golf polo/Singlet/  
Shorts

### POLY/SPANDEX JERSEY

240 GSM  
80% Polyester 20% Spandex  
Suitable for Leggings/Cycling suits

### POLY/SPANDEX JERSEY

270 GSM  
88% Polyester 12% Spandex  
Suitable for Netball dress/Skirts/Skort

## CUT AND SEW

### POLAR FLEECE

300 GSM

100% Polyester

Keep warm. Primarily used for cut and sew Jacket/Pants/Vest

### POLYESTER EYELET

160 GSM

100% Polyester

Cool to wear, quick to dry. Primarily used for cut and sew T-shirt/Singlet/Shorts/Polo shirt

### FLEECY

320 GSM

65% Polyester 35% Cotton

Keep warm. Primarily used for cut and sew Sweatshirt/Sweatpants/Varsity jacket/Hoodie/Zip-up hoodie

### TASLON

100 GSM

100% Nylon

Waterproof. Primarily used for cut and sew Weather jacket/Pants

### MICROFIBRE

100 GSM

100% Polyester

Waterproof. Primarily used for cut and sew Sport jacket/Sport pants/Shorts

### AEROMESH

100 GSM

65% Polyester 35% Cotton

Cool to wear. Primarily used for cut and sew T-shirt/Singlet/Shorts/Polo shirt

# SIZE GUIDE

## CRICKET TOPS (SHORT SLEEVE AND LONG SLEEVE)

Mens	XS	S	M	L	XL	2XL	3XL	4XL	5XL
<b>Chest</b>	50.5	53	55.5	58	60.5	63	68	70.5	73
<b>Body Length</b>	67	69	71	73	75	77	79	80	81

Kids	4	6	8	10	12	14	16	18
<b>Chest</b>	36	38	40	42	44	46	49	52
<b>Body Length</b>	49	52	55	58	61	64	67	69

Womens	6	8	10	12	14	16	18	20	22
<b>Chest</b>	42.5	45	47.5	50	52.5	55	57.5	60	64.5
<b>Body Length</b>	59	61	63	65	67	69	71	72	73

## CRICKET PANTS

Mens	XS	S	M	L	XL	2XL	3XL
<b>Waist Relaxed</b>	34	35.5	37	38.5	40	42.5	45
<b>Waist Band</b>	4	4	4	4	4	4	4
<b>Outside Length</b>	100	103	106	109	112	115	118

Kids	4	6	8	10	12	14	16
<b>Chest</b>	24	26	28	30	32	34	36
<b>Body Length</b>	3.5	3.5	3.5	3.5	3.5	3.5	3.5
<b>Sleeve Length</b>	70	75	80	85	90	95	100

Womens	6	8	10	12	14	16	18	20
<b>Waist Relaxed</b>	28	30.5	33	35.5	38	40.5	43	45.5
<b>Waist Band</b>	4	4	4	4	4	4	4	4
<b>Outside Length</b>	99	101	103	105	107	109	111	113

## TRAINING SHORTS

Mens	XS	S	M	L	XL	2XL	3XL	4XL	5XL
Waist Relaxed	31.5	34	36.5	39	41.5	44	46.5	49	51.5
Waist Band	3.5	3.5	3.5	3.5	3.5	3.5	3.5	3.5	3.5
Outside Length	45	46	47	48	49	50	51	52	53

Womens	6	8	10	12	14	16	18	20	22
Waist Relaxed	28	30.5	33	35.5	38	40.5	43	45.5	51.5
Waist Band	4	4	4	4	4	4	4	4	3.5
Outside Length	33.5	34.5	35.5	36.5	37.5	38.5	39.5	40.5	41

Kids	4	6	8	10	12	14	16
Waist Relaxed	22.5	24.5	26.5	28.5	30.5	32.5	34.5
Waist Band	4	4	4	4	4	4	4
Outside Length	28	30	32	34	36	38	40

## ATHLETIC/REVERSIBLE SINGLETS

Mens	XS	S	M	L	XL	2XL	3XL	4XL	5XL
Chest	47	49.5	52	54.5	57	59.5	62	64.5	67
Body Length	72	74	76	78	80	82	84	85	86

Womens	6	8	10	12	14	16	18	20	22
Chest	38.5	41	43.5	46	48.5	51	53.5	56.5	59.5
Body Length	55.5	57.5	59.5	61.5	63.5	65.5	67.5	69.5	71.5

## POLO SHIRT

Mens	XS	S	M	L	XL	2XL	3XL	4XL	5XL
Chest	50.5	53	55.5	58	60.5	63	68	70.5	73
Body Length	67	69	71	73	75	77	79	80	81

Womens	6	8	10	12	14	16	18	20	22
Chest	42.5	45	47.5	50	52.5	55	57.5	60	64.5
Body Length	59	61	63	65	67	69	71	72	73

Kids	2	4	6	8	10	12	14	16	18
Chest	34	36	38	40	42	44	46	49	52
Body Length	46	49	52	55	58	61	64	67	69

## TEE SHIRT/LONG SLEEVE SHIRT

Mens	XS	S	M	L	XL	2XL	3XL	4XL	5XL
Chest	50.5	53	55.5	58	60.5	63	68	70.5	73
Body Length	67	69	71	73	75	77	79	80	81

Womens	6	8	10	12	14	16	18	20	22
Chest	42.5	45	47.5	50	52.5	55	57.5	60	64.5
Body Length	59	61	63	65	67	69	71	72	73

Kids	4	6	8	10	12	14	16
Chest	36	38	40	42	44	46	49
Body Length	49	52	55	58	61	64	67



## HOODIES

Mens	XS	S	M	L	XL	2XL	3XL	4XL	5XL
Shoulder to Shoulder	47	48.5	50.5	52.5	54.5	56.5	60.5	63.5	66
Chest	54.5	56	58.5	61	63.5	66	71	73.5	76
Front Length	69	73	75	77	79	81	83	87	91
Sleeve Length	66	69	70	71	72	73	74	75	76

Kids	6	8	10	12	14	16
Shoulder to Shoulder	36	38	40	42	44	46
Chest	43	45	47	49	51	53
Front Length	55	57	60	62	64	66
Sleeve Length	48	50	52	54	56	58

## JACKETS

Mens	XS	S	M	L	XL	2XL	3XL	4XL	5XL
Chest	58	60	62	64	66	68	70	74	51.5
Body Length	72	74	76	78	80	82	84	88	3.5
Sleeve Length	61	62	63	64	65	66	67	68	58

Kids	4	6	8	10	12	14	16
Chest	42	45	48	51	54	57	60
Body Length	47	51	55	59	63	67	71
Sleeve Length	41.5	43.5	45.5	47.5	49.5	51.5	53.5



FOR THE  
SPORTS LEADER



@athleadau

**ATHLEAD.COM.AU**