



ATHLEAD

---

FOR THE SPORTS LEADER

**FUTSAL**  
**TEAMWEAR**  
CATALOGUE

# CONTENTS PAGE

**05**

ABOUT US

**08**

PLAYING GEAR

**16**

TRAINING RANGE

**26**

MERCHANDISE  
RANGE

**36**

DESIGN TEMPLATES

**42**

EMBELLISHMENTS

**50**

FABRICS

**54**

SIZE GUIDES



## MISSION

To provide a seamless cost effective merchandising and apparel solution to our customs.



## VALUES

Customer Focused  
Community Focused  
Innovative  
Dependable



## VISION

To be Australia's No. 1 for customer satisfaction of teamwear in Australia.

## ABOUT US

---

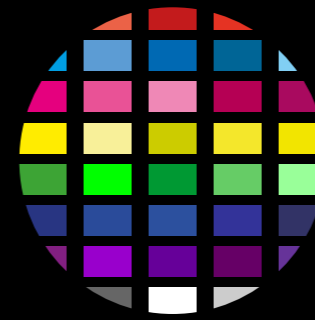
Athlead are a leading sports apparel and equipment provider in Australia. We strive to supply high-quality sporting apparel and equipment at a competitive price, with a focus on delivering an exceptional customer experience for all sporting clubs, associations and businesses. We are able to provide you with leading technologies, from sublimation to the ever-reliable embroidery; as well as new technologies, including digital transfer and digital prints.

FOLLOW US:



# CUSTOMISABLE GEAR

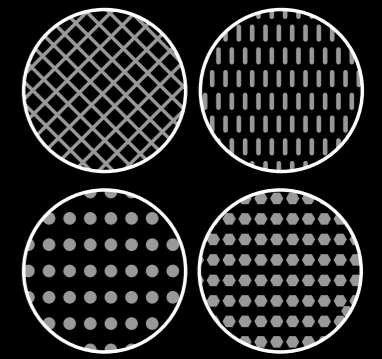
---



**VARIOUS COLOUR PATTERNS**



**LIMITLESS DESIGNS**



**DIVERSE FABRIC SELECTIONS**

## OUR DESIGN PROCESS

### SELECT

To get the process started, simply select your desired products from our extensive range. Athlead can customise your sporting apparel needs, regardless of the sport you play or support.

### QUOTE AND APPROVAL

Our sales team will work to prepare a quote based on quantity and sizing requirements. All our quotes are provided electronically for review and digital acceptance.

### DESIGN

Once we receive your accepted quote, share with us your ideas to create the apparel that is For The Sports Leader. Our talented design team will then prepare a concept for your approval. During our design process, we welcome unlimited revisions to ensure maximum customer satisfaction.

### ORDER

Once the design has been approved, the order is placed with our talented supply chain. You will then receive an email to confirm your order and expected delivery time frame.

At this time you will also receive your invoice for payment prior to dispatch.


### RECEIVE

Using our trusted logistics partners, we ship your items direct to your door.

We have an Official Apparel Supplier (OAS) program, which is offered to a variety of sporting organisations around Australia. Through this program, Athlead would exclusively supply all your sporting apparel and in return, we would pay you a sponsorship based on your annual spend with us.

At Athlead we want to ensure you have the best experience possible.

To commence your design process or to provide feedback, please feel free to contact us and one of our friendly team members will be in touch with you.

 02 6181 0209

 [sales@athlead.com.au](mailto:sales@athlead.com.au)

 [athlead.com.au](http://athlead.com.au)

# PLAYING GEAR

## PLAYING SHIRT



### CUTS

MENS

WOMENS

KIDS



### SIZES

XS-5XL

MENS

6-22

WOMENS

4-16

KIDS

### FABRICS

- POLYESTER
- COTTON

## PLAYING SHIRT (LONG SLEEVE)



### CUTS

- MENS
- WOMENS
- KIDS



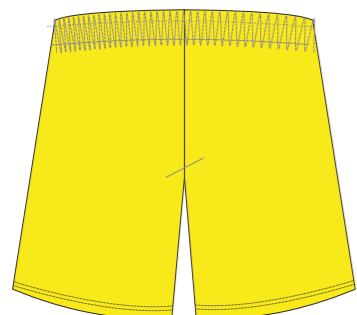
### SIZES

- XS-5XL
- 6-22
- 4-16
- MENS
- WOMENS
- KIDS

### FABRICS

- POLYESTER
- COTTON

## PLAYING SHORTS



### CUTS

MENS

WOMENS

KIDS



### SIZES

XS-5XL

MENS

6-22

WOMENS

4-16

KIDS

### FABRICS

- POLYESTER
- COTTON

FOOTY SOCKS



CUTS

KIDS  
MENS



SIZES

2-8  
8-14

KIDS  
MENS

FABRICS

- POLYESTER
- COTTON



# TRAINING RANGE

## TRAINING SHIRT



### CUTS

MENS

WOMENS

KIDS



### SIZES

XS-5XL

MENS

6-22

WOMENS

4-16

KIDS

### FABRICS

- POLYESTER
- COTTON

## LONG SLEEVE SHIRT



### CUTS

MENS

WOMENS

KIDS



### SIZES

XS-5XL

MENS

6-22

WOMENS

4-16

KIDS

### FABRICS

- POLYESTER
- COTTON

# TRAINING SHORTS



## CUTS

- MENS
- WOMENS
- KIDS



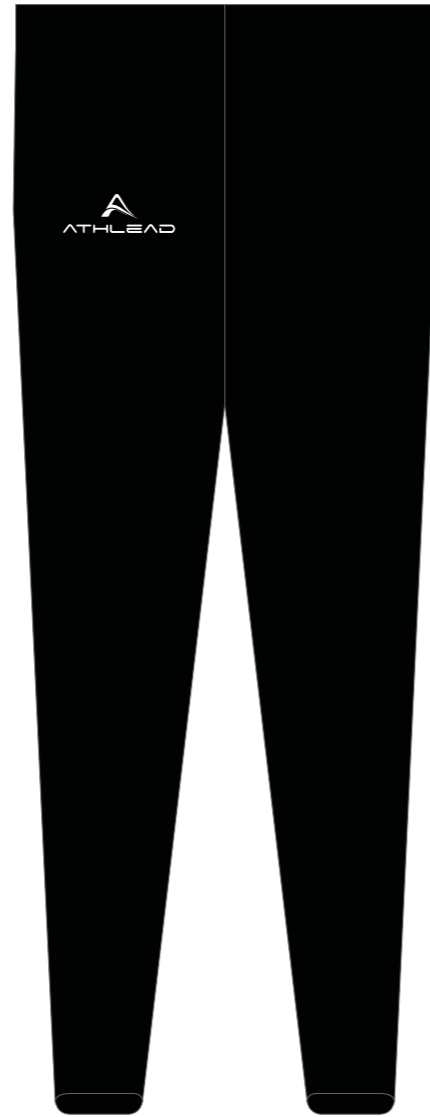
## SIZES

- XS-5XL
- 6-22
- 4-16
- MENS
- WOMENS
- KIDS

## FABRICS

- POLYESTER
- COTTON

## TIGHTS (PANTS LENGTH)



### CUTS

MENS

WOMENS



### SIZES

XS-5XL

MENS

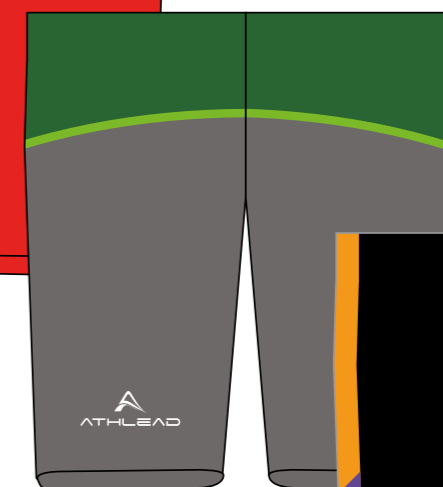
6-22

WOMENS

### FABRICS

- POLYESTER
- SPANDEX
- NYLON
- ELASTANE

**TIGHTS** (SHORTS LENGTH)



**CUTS**

WOMENS



**SIZES**

6-22

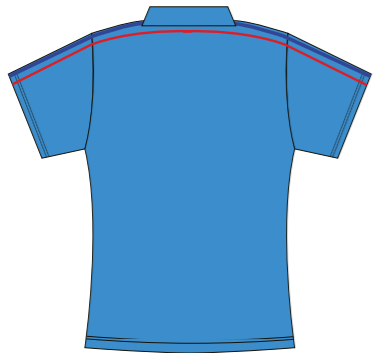
WOMENS

**FABRICS**

- POLYESTER
- SPANDEX
- NYLON
- ELASTANE

# MERCHANDISE RANGE

## POLO TOP



## CUTS

MENS

WOMENS

KIDS



## SIZES

XS-5XL

MENS

6-22

WOMENS

4-16

KIDS

## FABRICS

- POLYESTER
- COTTON

# HOODIE



## CUTS

MENS

KIDS



## SIZES

XS-5XL

4-16

MENS

KIDS

## FABRICS

- POLYESTER
- COTTON

## ZIP UP HOODIE



### CUTS

MENS

KIDS



### SIZES

XS-5XL

4-16

MENS

KIDS

### FABRICS

- POLYESTER
- COTTON



## SOFT SHELL JACKET



### CUTS

MENS

KIDS



### SIZES

XS-5XL

4-16

MENS

KIDS

### FABRICS

- POLYESTER
- COTTON

SUBLIMATED JACKET



CUTS

- MENS
- KIDS



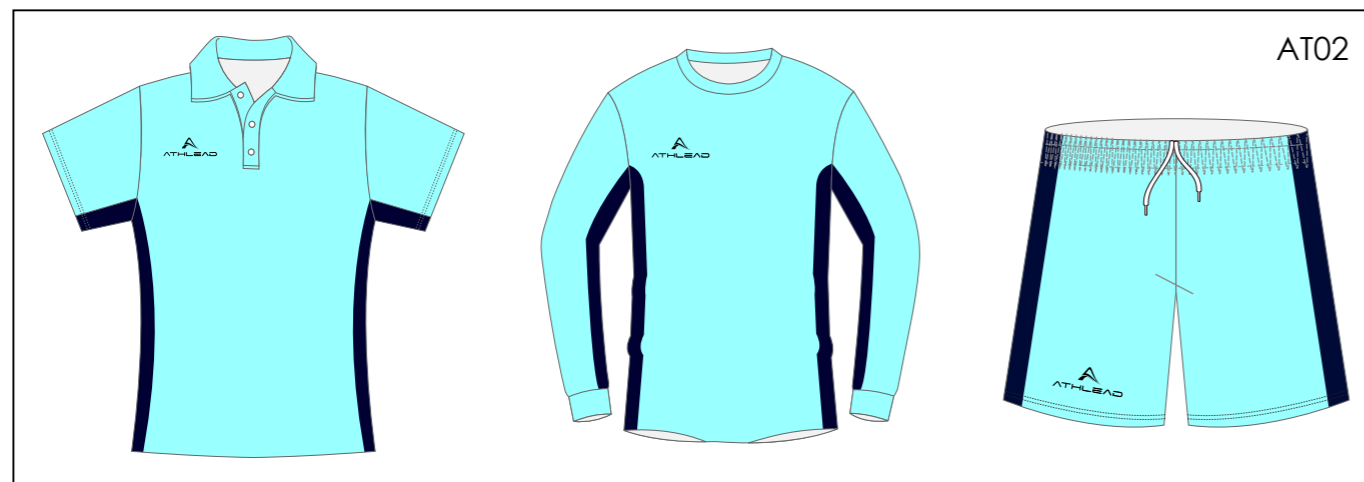
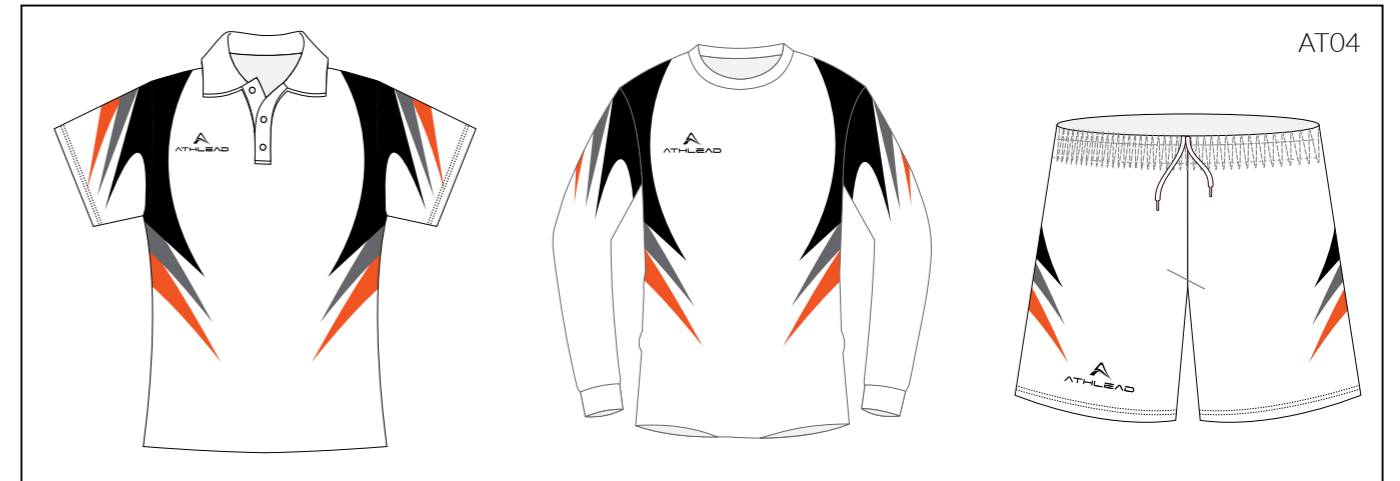
SIZES

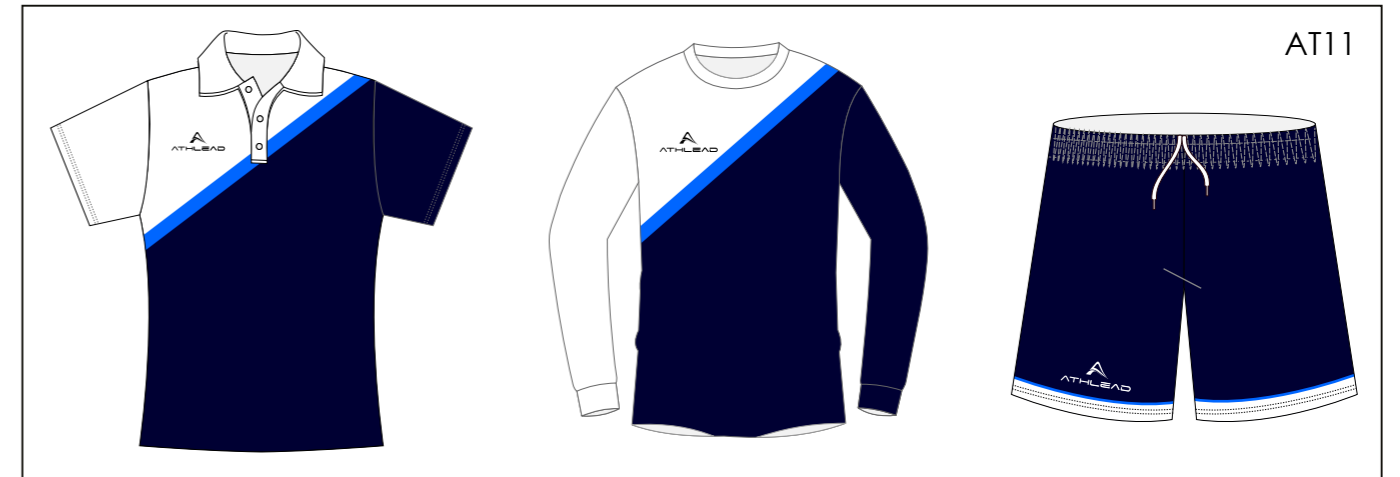
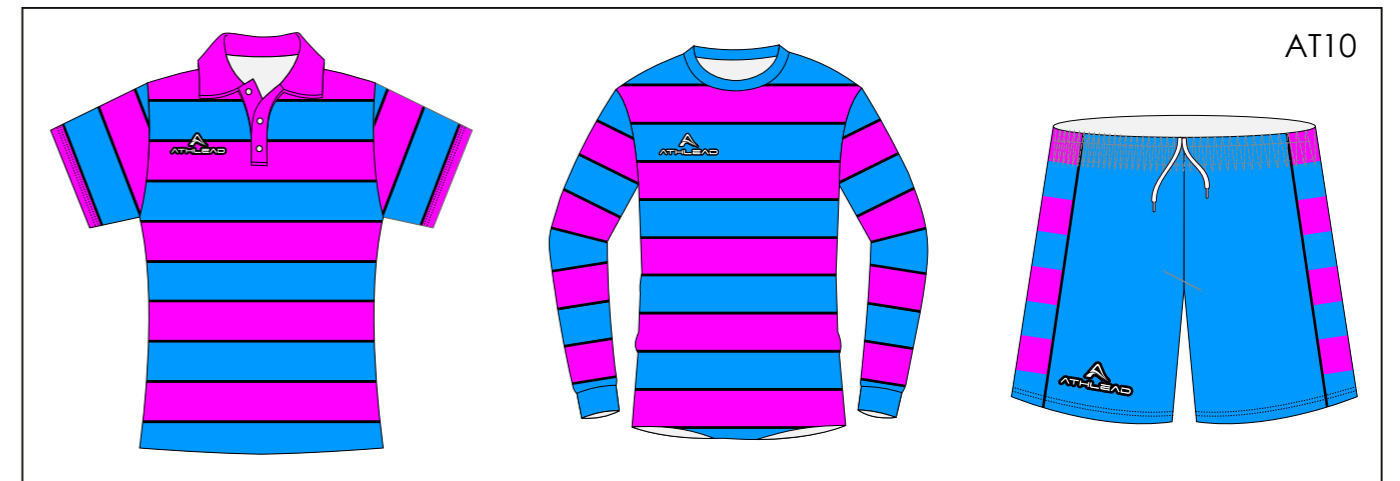
- XS-5XL
- 4-16
- MENS
- KIDS

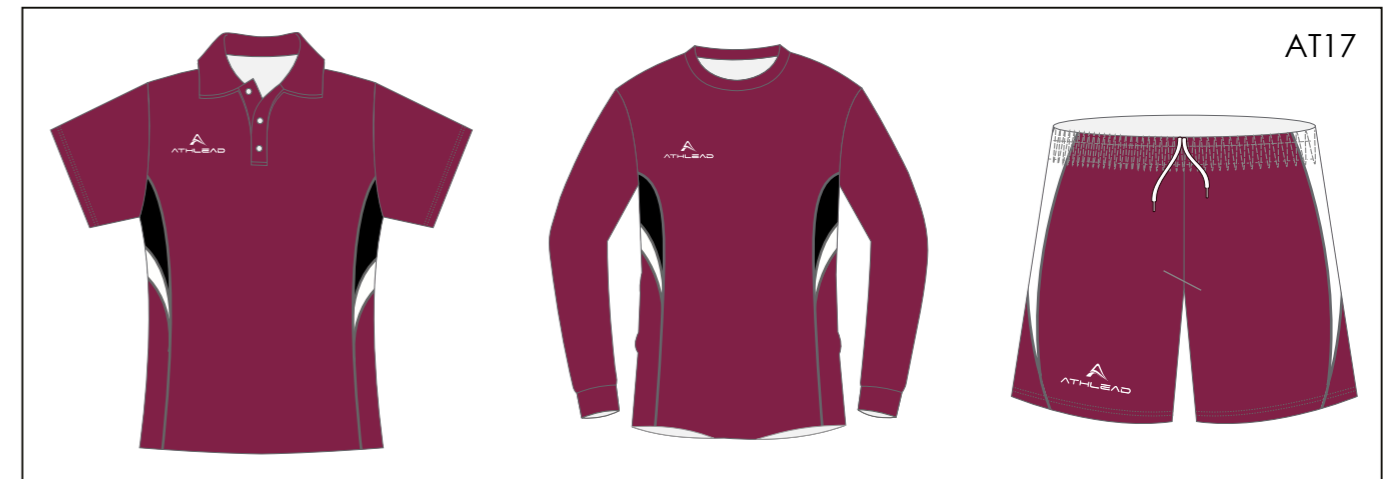
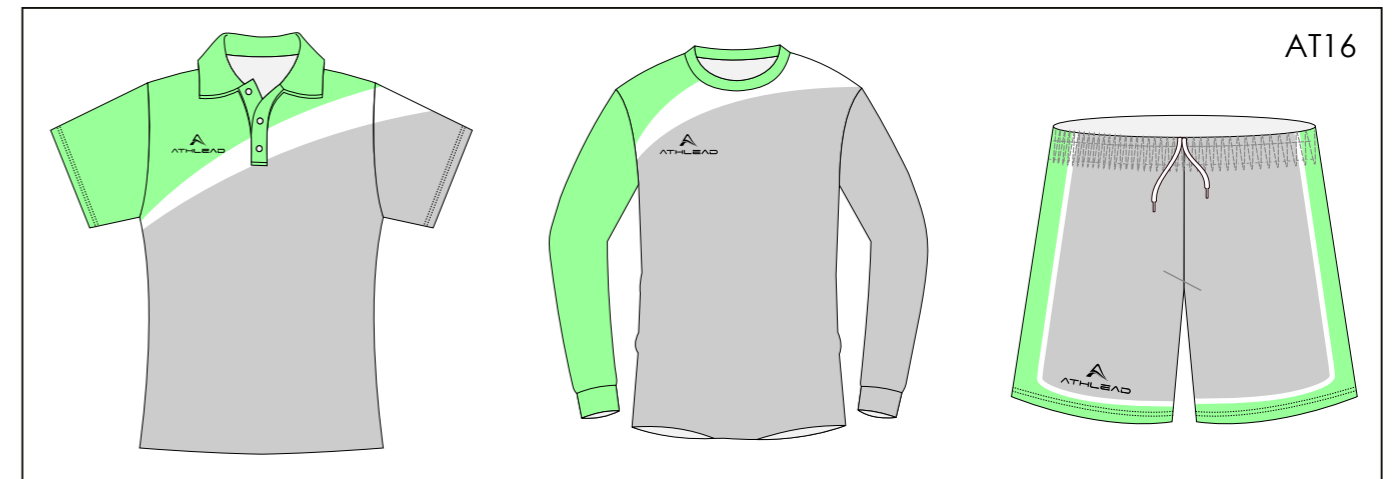
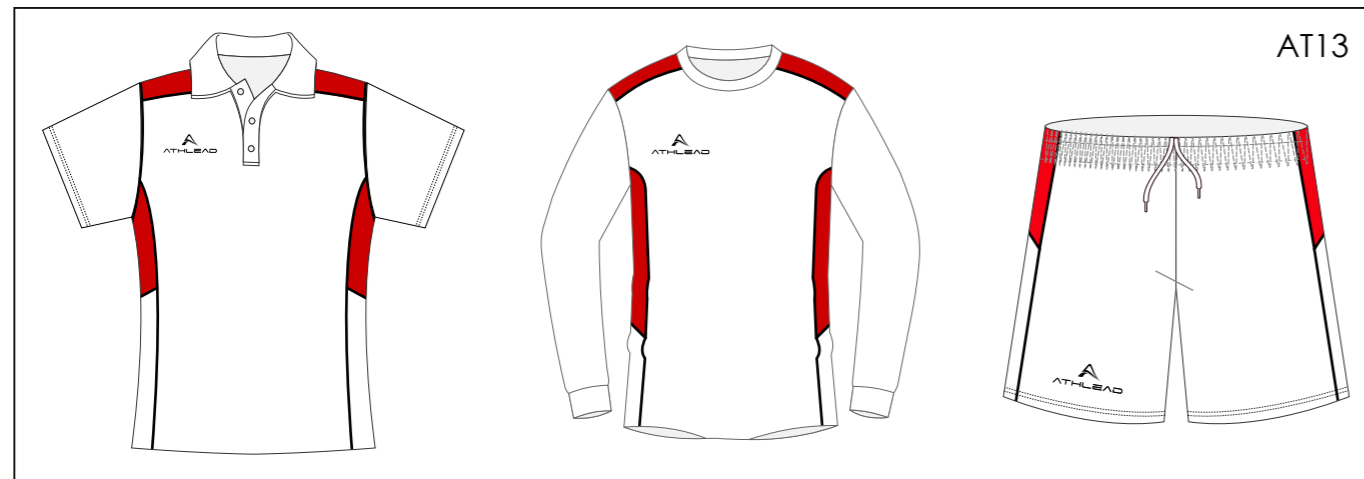
FABRICS

- POLYESTER
- NYLON
- COTTON

# DESIGN TEMPLATES



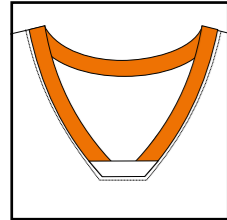




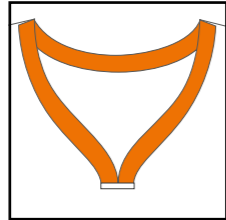
**i** Couldn't find the design you were after? Please feel free to contact us and our team will then prepare custom designs for your approval.

# EMBELLISHMENTS

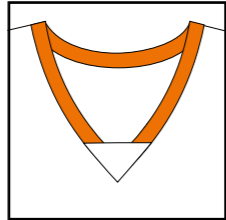
## COLLAR TYPES



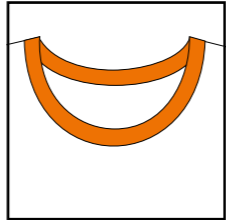
COLLAR #1



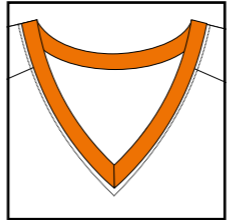
COLLAR #2



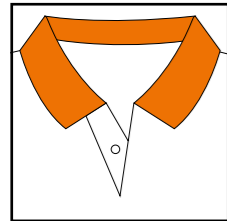
COLLAR #3



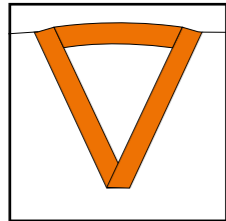
COLLAR #4



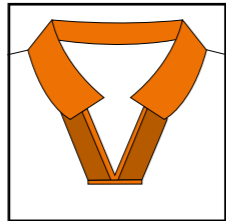
COLLAR #5



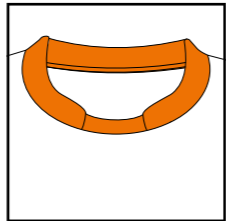
COLLAR #6



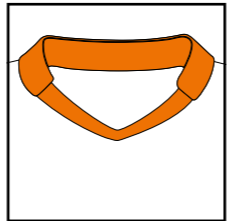
COLLAR #7



COLLAR #8



COLLAR #9



COLLAR #10

## NAME



TOP



BOTTOM

## NUMBERING



**25** 25

Impact

**25** 25

College

**25** 25

Curve

**25** 25

Athletic

**25** 25

Clean

**25** 25

Square



ARCHED



WITH NUMBER

# LOGOS

Front - Left Chest



Front - Right Chest



Front - Stomach



Side - Left Sleeve



Side - Right Sleeve



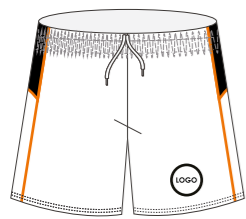
Back - Top



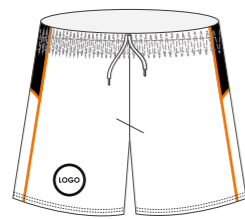
Back - Bottom



Front - Left Thigh



Front - Right Thigh



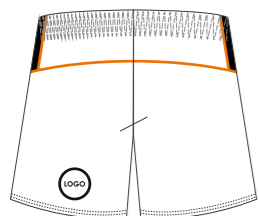
Side - Left Thigh



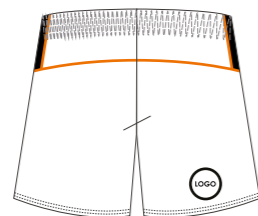
Side - Right Thigh



Back - Left Thigh



Back - Right Thigh



# ATHLEAD LOGO

Front - Left Chest



Front - Right Chest



Front - Centre Neck



Back - Top



Side - Left Sleeve



Side - Right Sleeve



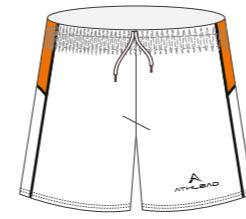
Front - Left Shoulder



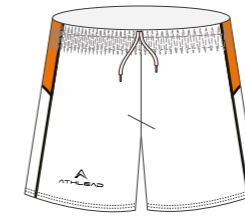
Front - Right Shoulder



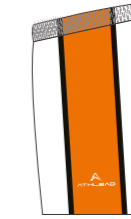
Front - Left Thigh



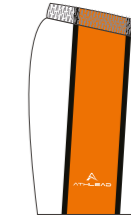
Front - Right Thigh



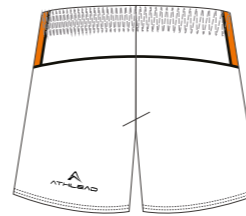
Side - Left Thigh



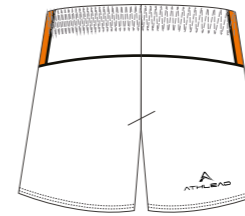
Side - Right Thigh



Back - Left Thigh



Back - Right Thigh



# CUTS

## SHIRTS, JACKETS, AND HOODIES

Fitted



Raglan



## ATHLETIC SINGLET

Razer

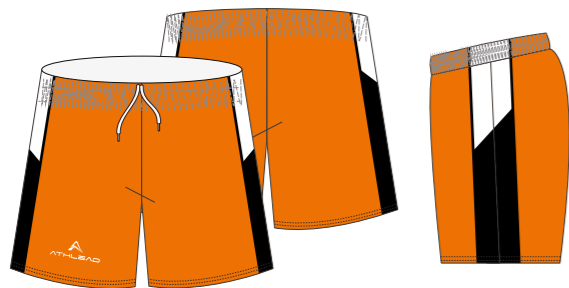


Straight

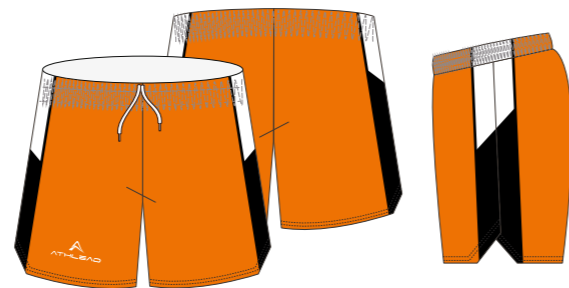


# SHORTS

Standard



Elite





## TEMPLATE ALTERATIONS

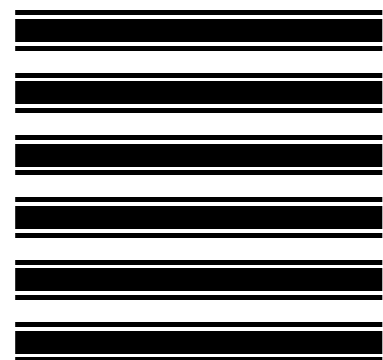
### PATTERN INTEGRATION

Select a template



AT02

Provide a pattern



### TEMPLATE COMBINATION

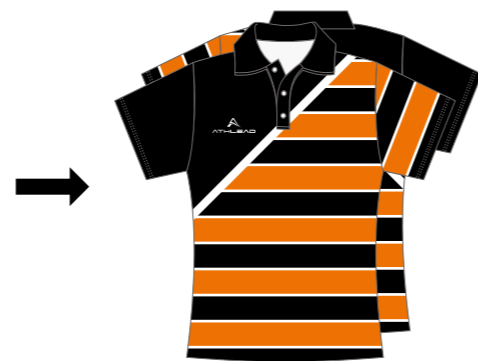
Combine features from different templates



AT10



AT11



## SUBLIMATED FABRIC SWATCH

### INTERLOCK

150 GSM  
100% Polyester  
Suitable for T-shirt/Polo shirt/  
Singlet/Shorts

### INTERLOCK

260 GSM  
100% Polyester  
Suitable for AFL/Rugby

### INTERLOCK BRUSHED BACK

210 GSM  
100% Polyester  
Suitable for Hoodie/Zip-up hoodie/  
Tracksuit

### INTERLOCK BRUSHED BACK

320 GSM  
100% Polyester  
Suitable for Hoodie/Zip-up hoodie/  
Jacket/Pants

### SOFTSHELL

280 GSM  
100% Polyester  
Keep warm, primarily used Softshell  
jacket

### TAFFETA

100% Polyester  
Waterproof. Primarily used for  
Lightweight jacket

### MICROFIBRE

130 GSM  
100% Polyester  
Suitable for Tracksuit

### MICROMESH

165 GSM  
100% Polyester  
Suitable for T-shirt/Polo shirt/Singlet/  
Shorts/Basketball/Cycling/Cricket/  
Netball dress

### MINI WAFFLE

150 GSM  
100% Polyester  
Suitable for T-shirt/Polo shirt/Singlet/  
Shorts/Basketball/Cycling

### MINI WAFFLE

160 GSM  
100% Polyester  
Suitable for T-shirt/Polo shirt/Singlet/  
Shorts/Basketball/Cycling/Cricket/  
Netball dress

### MINI WAFFLE KNIT

145 GSM  
100% Polyester  
Suitable for T-shirt/Polo shirt/Singlet/  
Shorts/Basketball/Soccer/  
Cycling/Cricket/Netball dress

### BIRDSEYE MESH

135 GSM  
92% Polyester 8% Elastane  
Suitable for T-shirt/Polo shirt/Singlet/  
Shorts/Reversible basketball singlet

### POLYESTER DIAMOND KNIT

135 GSM  
100% Polyester  
Suitable for T-shirt/Polo shirt/Golf  
polo/Singlet

### POLYESTER STRIP KNIT

150 GSM  
100% Polyester  
Suitable for T-shirt/Polo shirt/Singlet/  
Shorts/Basketball/Soccer/Cycling/  
Cricket/Netball dress

### POLY/ESTANE AIR MESH

180 GSM  
92% Polyester 8% Elastane  
Suitable for T-shirt/Polo shirt/Singlet/  
Shorts/Soccer/Basketball

### POLY/ESTANE

240 GSM  
88% Polyester 12% Elastane  
Suitable for Leggings/Cycling

### POLY/SPANDEX JERSEY

200 GSM  
88% Polyester 12% Spandex  
Suitable for T-shirt/Golf polo/Singlet/  
Shorts

### POLY/SPANDEX JERSEY

240 GSM  
80% Polyester 20% Spandex  
Suitable for Leggings/Cycling suits

### POLY/SPANDEX JERSEY

270 GSM  
88% Polyester 12% Spandex  
Suitable for Netball dress/Skirts/Skort

## CUT AND SEW

### POLAR FLEECE

300 GSM

100% Polyester

Keep warm. Primarily used for cut and sew Jacket/Pants/Vest

### POLYESTER EYELET

160 GSM

100% Polyester

Cool to wear, quick to dry. Primarily used for cut and sew T-shirt/Singlet/Shorts/Polo shirt

### FLEECY

320 GSM

65% Polyester 35% Cotton

Keep warm. Primarily used for cut and sew Sweatshirt/Sweatpants/Varsity jacket/Hoodie/Zip-up hoodie

### TASLON

100 GSM

100% Nylon

Waterproof. Primarily used for cut and sew Weather jacket/Pants

### MICROFIBRE

100 GSM

100% Polyester

Waterproof. Primarily used for cut and sew Sport jacket/Sport pants/Shorts

### AEROMESH

100 GSM

65% Polyester 35% Cotton

Cool to wear. Primarily used for cut and sew T-shirt/Singlet/Shorts/Polo shirt

# SIZE GUIDE

## TOPS (SHORT SLEEVE AND LONG SLEEVE)

Mens	XS	S	M	L	XL	2XL	3XL	4XL	5XL
Chest	50.5	53	55.5	58	60.5	63	68	70.5	73
Body Length	67	69	71	73	75	77	79	80	81

Kids	2	4	6	8	10	12	14	16	18
Chest	34	36	38	40	42	44	46	49	52
Body Length	46	49	52	55	58	61	64	67	69

## SPORT SHORTS

Mens	XS	S	M	L	XL	2XL	3XL	4XL	5XL
Waist Relaxed	31.5	34	36.5	39	41.5	44	46.5	49	51.5
Waist Band	3.5	3.5	3.5	3.5	3.5	3.5	3.5	3.5	3.5
Outside Length	45	46	47	48	49	50	51	52	53

Womens	6	8	10	12	14	16	18	20	22
Waist Relaxed	28	30.5	33	35.5	38	40.5	43	45.5	51.5
Waist Band	4	4	4	4	4	4	4	4	3.5
Outside Length	33.5	34.5	35.5	36.5	37.5	38.5	39.5	40.5	41

Kids	4	6	8	10	12	14	16
Waist Relaxed	22.5	24.5	26.5	28.5	30.5	32.5	34.5
Waist Band	4	4	4	4	4	4	4
Outside Length	28	30	32	34	36	38	40

## TIGHTS (LONG)

Mens	XS	S	M	L	XL	2XL	3XL	4XL	5XL
Waist	71	74	77	80	83	86	89	92	95
Hips	77	80	83	86	89	92	95	98	101
Length	91.5	93	94.5	96	97.5	99	101	102.5	104

Womens	4	6	8	10	12
Waist	54	58	60	62	65
Hips	58	62	65	67	70
Length	36.5	60	65	75	82

## TIGHTS (SHORT)

Womens	4	6	8	10	12	14	16	18	20
Waist	28	30	32	34	36	38	40	42	44
Length	24.5	26.5	28.5	30.5	32.5	34.5	36.5	38.5	40.5

## POLO SHIRT

Mens	XS	S	M	L	XL	2XL	3XL	4XL	5XL
<b>Chest</b>	50.5	53	55.5	58	60.5	63	68	70.5	73
<b>Body Length</b>	67	69	71	73	75	77	79	80	81

Womens	6	8	10	12	14	16	18	20	22
<b>Chest</b>	42.5	45	47.5	50	52.5	55	57.5	60	64.5
<b>Body Length</b>	59	61	63	65	67	69	71	72	73

Kids	2	4	6	8	10	12	14	16	18
<b>Chest</b>	34	36	38	40	42	44	46	49	52
<b>Body Length</b>	46	49	52	55	58	61	64	67	69

## HOODIES

Mens	XS	S	M	L	XL	2XL	3XL	4XL	5XL
<b>Shoulder to Shoulder</b>	47	48.5	50.5	52.5	54.5	56.5	60.5	63.5	66
<b>Chest</b>	54.5	56	58.5	61	63.5	66	71	73.5	76
<b>Front Length</b>	69	73	75	77	79	81	83	87	91
<b>Sleeve Length</b>	66	69	70	71	72	73	74	75	76

Kids	6	8	10	12	14	16
<b>Shoulder to Shoulder</b>	36	38	40	42	44	46
<b>Chest</b>	43	45	47	49	51	53
<b>Front Length</b>	55	57	60	62	64	66
<b>Sleeve Length</b>	48	50	52	54	56	58

## JACKETS

Mens	XS	S	M	L	XL	2XL	3XL	4XL	5XL
<b>Chest</b>	58	60	62	64	66	68	70	74	51.5
<b>Body Length</b>	72	74	76	78	80	82	84	88	3.5
<b>Sleeve Length</b>	61	62	63	64	65	66	67	68	58

Kids	4	6	8	10	12	14	16
<b>Chest</b>	42	45	48	51	54	57	60
<b>Body Length</b>	47	51	55	59	63	67	71
<b>Sleeve Length</b>	41.5	43.5	45.5	47.5	49.5	51.5	53.5



FOR THE  
SPORTS LEADER



@athleadau

**ATHLEAD.COM.AU**