

TOUCH FOOTBALL TEAMWEAR CATALOGUE



ATHLEAD

FOR THE SPORTS LEADER

CONTENTS PAGE

05
ABOUT US

08
PLAYING GEAR

26
MERCHANDISE
RANGE

44
DESIGN TEMPLATES

50
EMBELLISHMENTS

58
FABRICS

62
SIZE GUIDES



MISSION

To provide a seamless cost effective merchandising and apparel solution to our customs.



VALUES

Customer Focused
Community Focused
Innovative
Dependable



VISION

To be Australia's No. 1 for customer satisfaction of teamwear in Australia.

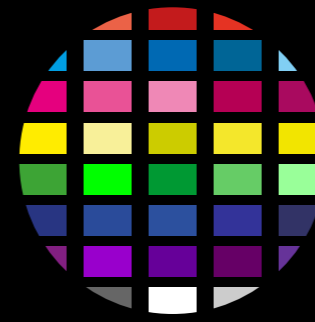
ABOUT US

Athlead are a leading sports apparel and equipment provider in Australia. We strive to supply high-quality sporting apparel and equipment at a competitive price, with a focus on delivering an exceptional customer experience for all sporting clubs, associations and businesses. We are able to provide you with leading technologies, from sublimation to the ever-reliable embroidery; as well as new technologies, including digital transfer and digital prints.

FOLLOW US:



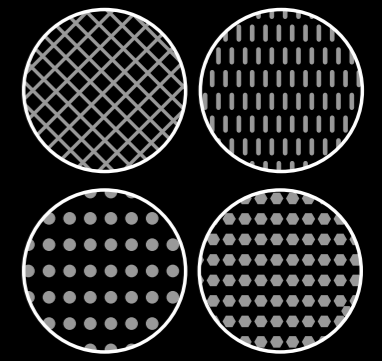
CUSTOMISABLE GEAR



VARIOUS COLOUR PATTERNS



LIMITLESS DESIGNS



DIVERSE FABRIC SELECTIONS

OUR DESIGN PROCESS

SELECT

To get the process started, simply select your desired products from our extensive range. Athlead can customise your sporting apparel needs, regardless of the sport you play or support.

QUOTE AND APPROVAL

Our sales team will work to prepare a quote based on quantity and sizing requirements. All our quotes are provided electronically for review and digital acceptance.

DESIGN

Once we receive your accepted quote, share with us your ideas to create the apparel that is For The Sports Leader. Our talented design team will then prepare a concept for your approval. During our design process, we welcome unlimited revisions to ensure maximum customer satisfaction.

ORDER

Once the design has been approved, the order is placed with our talented supply chain. You will then receive an email to confirm your order and expected delivery time frame.

At this time you will also receive your invoice for payment prior to dispatch.


RECEIVE

Using our trusted logistics partners, we ship your items direct to your door.

We have an Official Apparel Supplier (OAS) program, which is offered to a variety of sporting organisations around Australia. Through this program, Athlead would exclusively supply all your sporting apparel and in return, we would pay you a sponsorship based on your annual spend with us.

At Athlead we want to ensure you have the best experience possible.

To commence your design process or to provide feedback, please feel free to contact us and one of our friendly team members will be in touch with you.

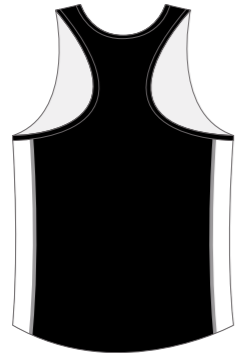
 02 6181 0209

 sales@athlead.com.au

 athlead.com.au

PLAYING GEAR

ATHLETIC SINGLET



CUTS

MENS

WOMENS



SIZES

XS-5XL

MENS

6-22

WOMENS

FABRICS

- POLYESTER
- ELASTANE
- SPANDEX

SPORTS TOP



CUTS

MENS
WOMENS
KIDS



SIZES

XS-5XL
6-22
4-16

MENS
WOMENS
KIDS

FABRICS

- POLYESTER
- COTTON

FOOTY SHORTS



CUTS

MENS
KIDS



SIZES

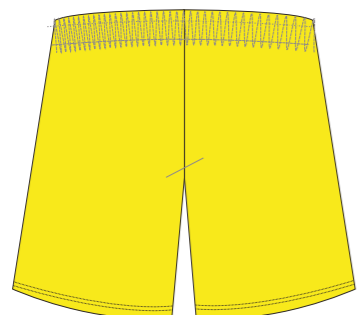
XS-5XL
4-16

MENS
KIDS

FABRICS

- POLYESTER
- ELASTANE
- SPANDEX

ATHLETIC SHORTS



CUTS

MENS
WOMENS
KIDS



SIZES

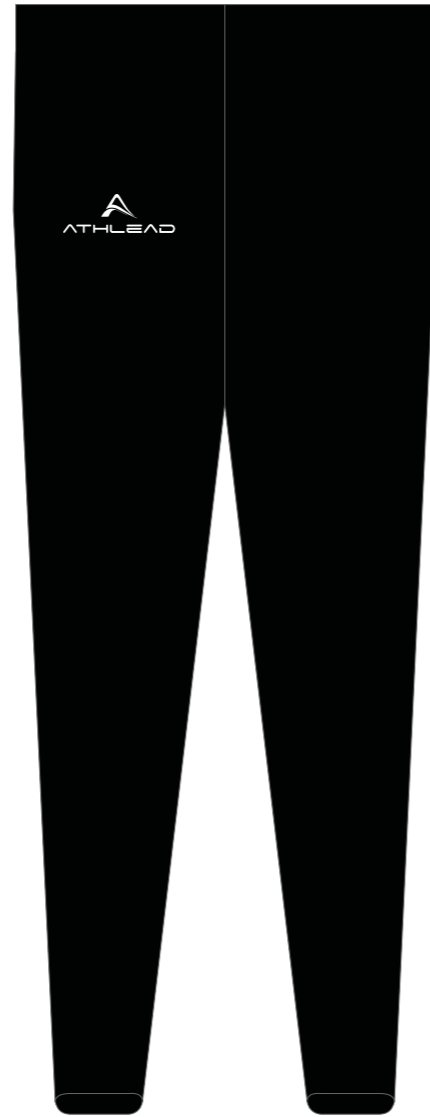
XS-5XL
6-22
4-16

MENS
WOMENS
KIDS

FABRICS

- POLYESTER
- ELASTANE
- SPANDEX

TIGHTS (PANTS LENGTH)



CUTS

MENS

WOMENS



SIZES

XS-5XL

MENS

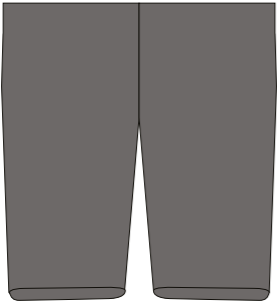
6-22

WOMENS

FABRICS

- POLYESTER
- SPANDEX
- NYLON
- ELASTANE

TIGHTS (SHORTS LENGTH)



CUTS

WOMENS



SIZES

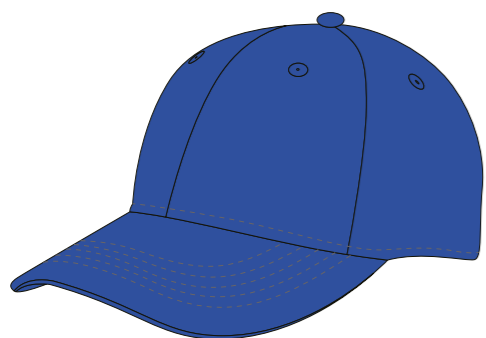
6-22

WOMENS

FABRICS

- POLYESTER
- SPANDEX
- NYLON
- ELASTANE

CAPS



CUTS

MENS
KIDS



SIZES

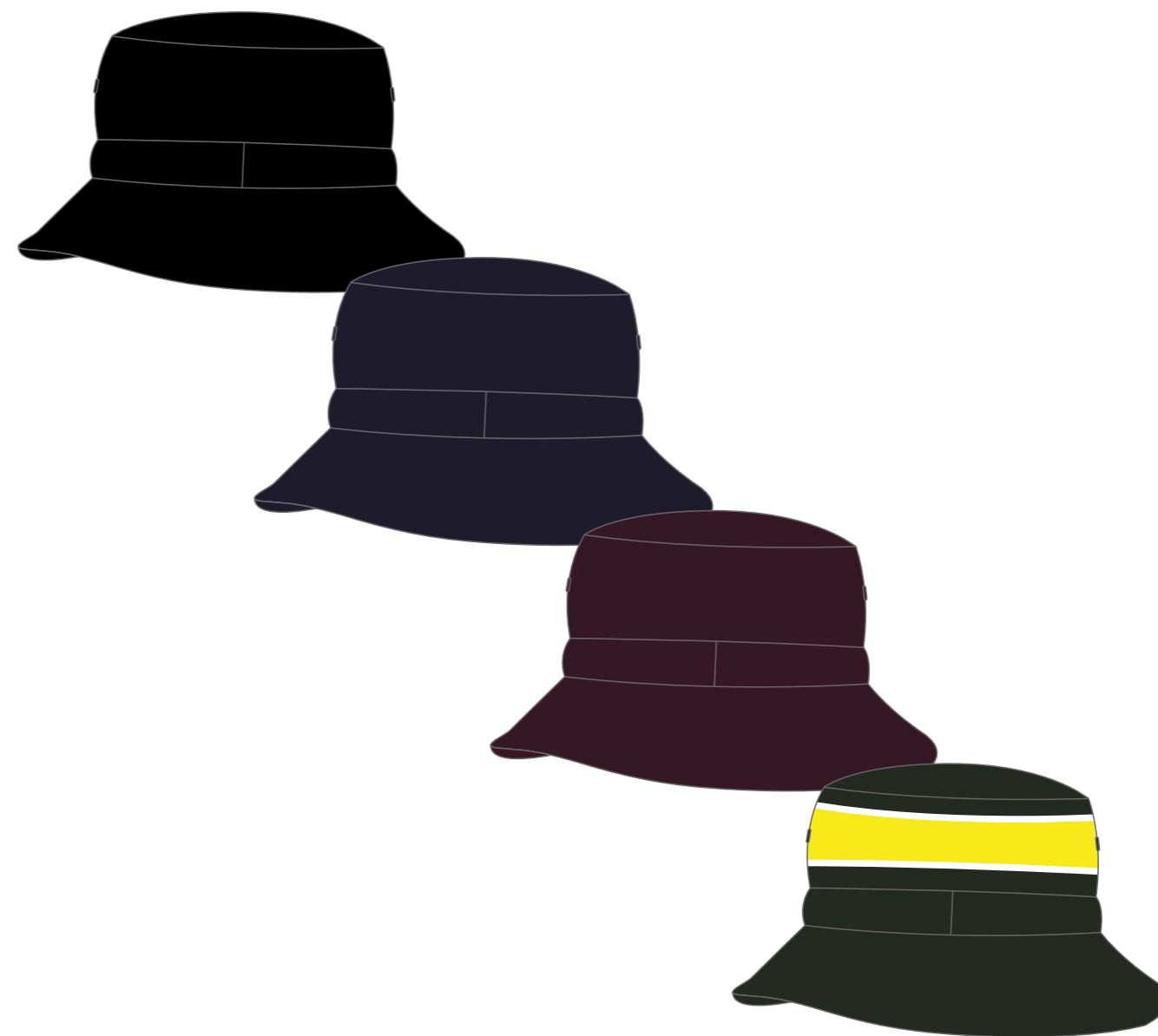
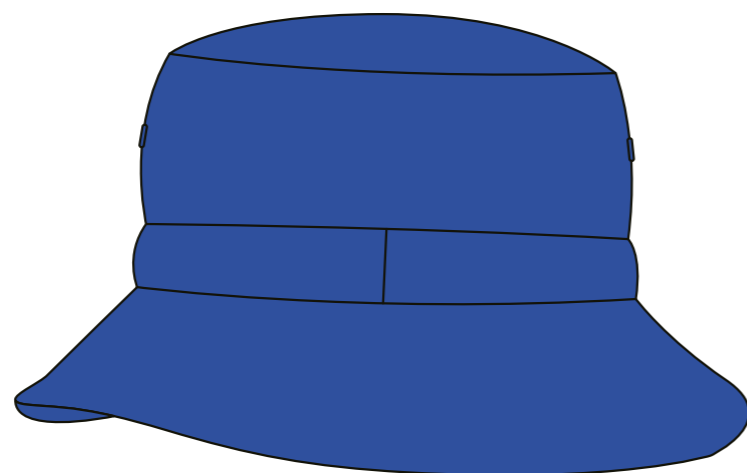
OSFM
OSFM

MENS
KIDS

TYPES

- BASEBALL
- TRUCKER
- SNAPBACK

BUCKET HATS



CUTS

MENS

KIDS



SIZES

OSFM

MENS

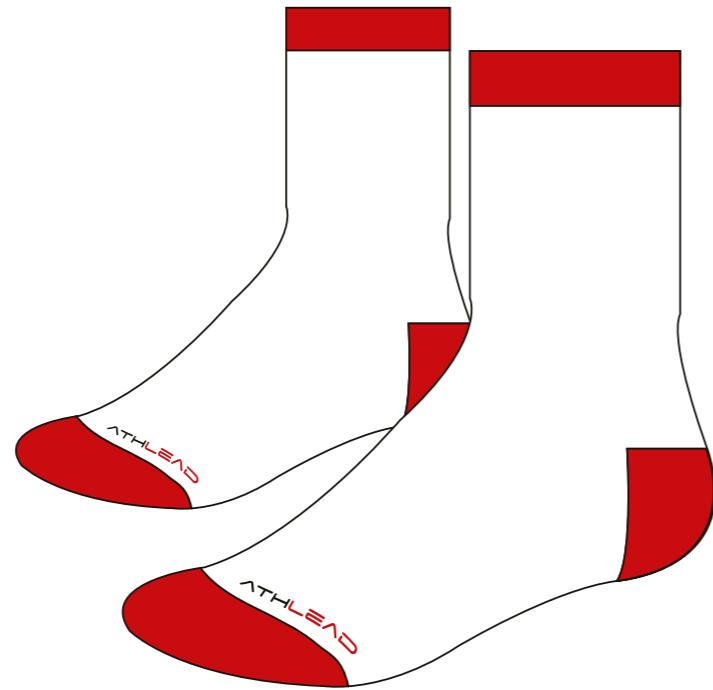
OSFM

KIDS

FABRICS

- POLYESTER
- COTTON

SOCKS



CUTS

- KIDS
- MENS



SIZES

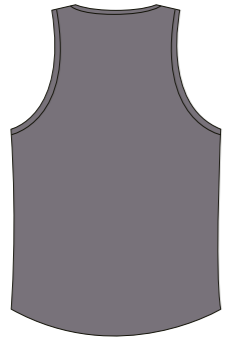
- 2-8 KIDS
- 8-14 MENS

FABRICS

- POLYESTER
- NYLON
- COTTON

MERCHANDISE RANGE

OFF FIELD TANK TOP



CUTS

MENS

WOMENS



SIZES

XS-3XL

MENS

8-20

WOMENS

FABRICS

- COTTON

POLO TOP



CUTS

MENS

KIDS



SIZES

XS-5XL

MENS

4-16

KIDS

FABRICS

- POLYESTER
- COTTON

PULLOVER HOODIE



CUTS

MENS
KIDS



SIZES

XS-5XL
4-16

MENS
KIDS

FABRICS

- POLYESTER
- COTTON

TRACKSUIT JACKET



CUTS

- MENS
- KIDS



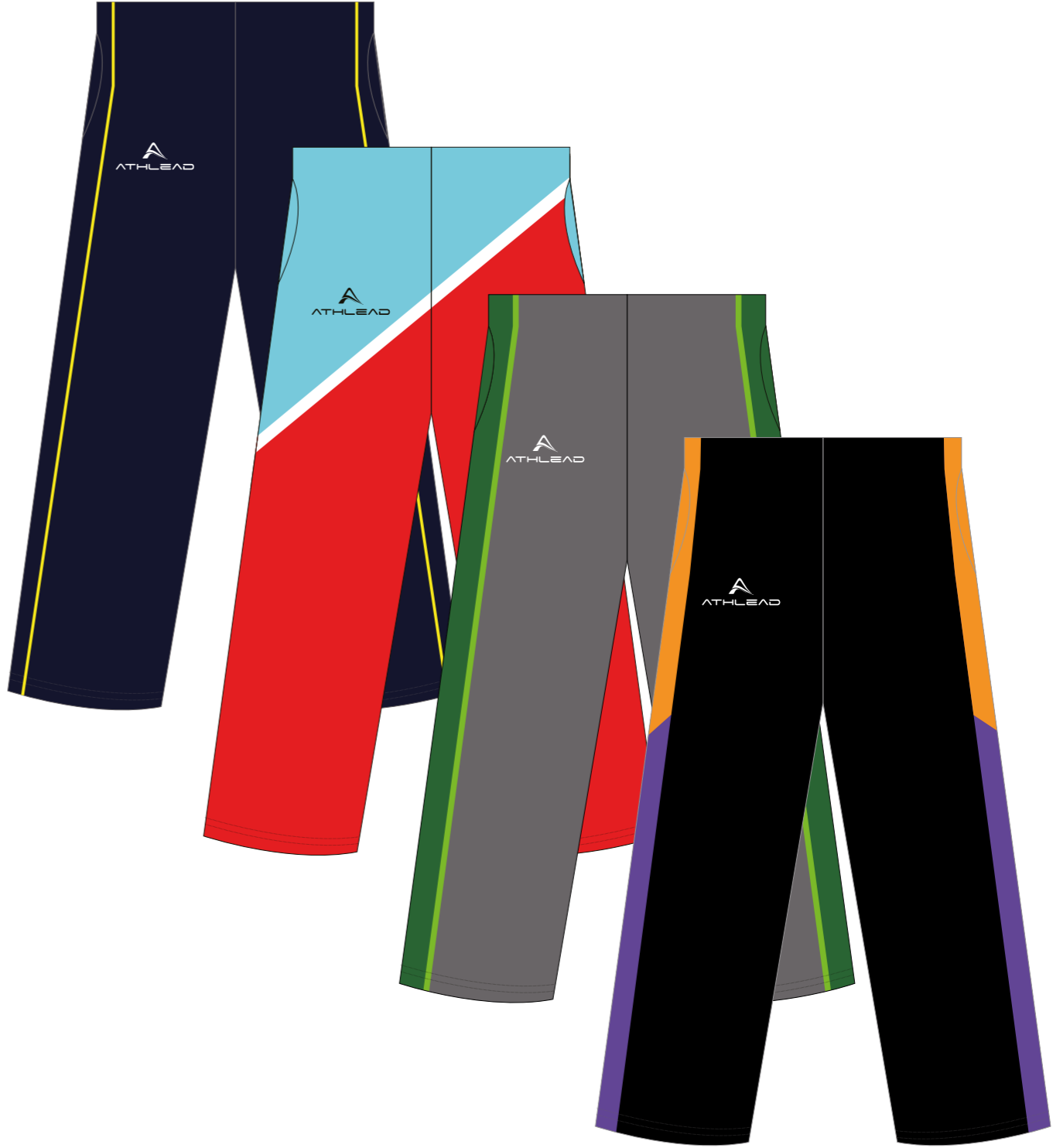
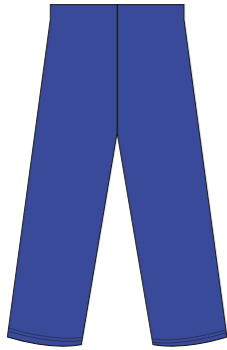
SIZES

- XS-5XL
- MENS
- 4-16
- KIDS

FABRICS

- POLYESTER
- NYLON
- COTTON

TRACKSUIT PANTS



CUTS

- MENS
- KIDS



SIZES

- XS-5XL
- 4-16

- MENS
- KIDS

FABRICS

- POLYESTER
- COTTON

TAPERED PANTS



CUTS

UNISEX



SIZES

3XS-3XL

UNISEX

FABRICS

- POLYESTER
- COTTON
- NYLON

SPRAY JACKET



CUTS

MENS
KIDS



SIZES

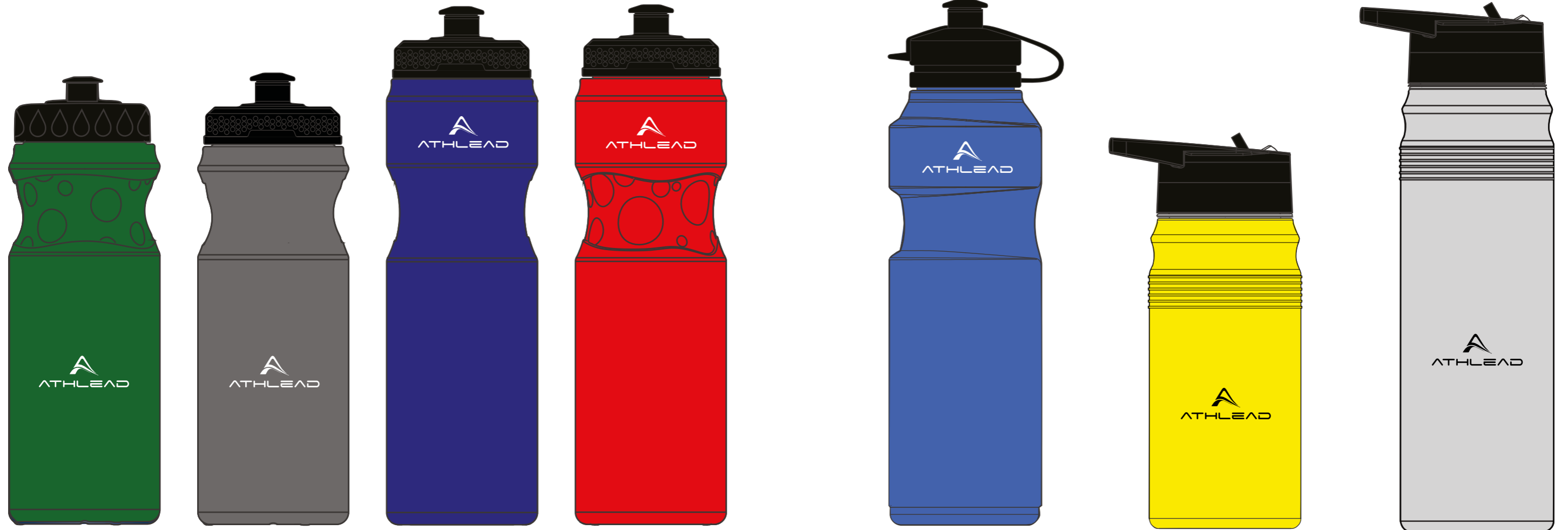
XS-5XL
4-16

MENS
KIDS

FABRICS

- POLYESTER

DRINK BOTTLES



Bubbles
650ml

Budget
650ml

Budget
800ml

Oxygen
800ml

RAPTURE
750ml

TORPEDO
650ml

TORPEDO
800ml

SPORT BAGS



Nylon Sports Bag

Available Colours

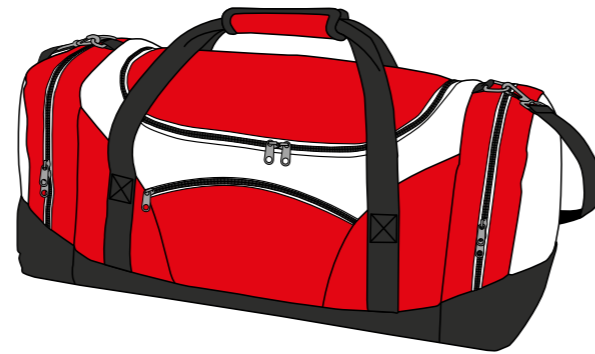
- Maroon
- Bottle
- Royal
- Red
- Black
- Navy

Size

- 52cm (W) x 31cm (H) x 31cm (D)
- 50 litres

Fabric

- Tough textured nylon



Stellar Sports Bag

Available Colours

- Red/White
- Black/Red
- Black/White
- Stone/White
- Maroon/White
- Navy/Gold
- Navy/White

Size

- 65cm (W) x 29cm (H) x 30cm (D)
- 57 litres

Fabric

- 600 denier nylon



Tri-Colour Sports Bag

Available Colours

- Yellow/White/Black
- Black/White/Red
- Royal/White/Black
- Navy/White/Red
- Bottle/White/Yellow

Size

- 65cm (W) x 30cm (H) x 25cm (D)
- 48 litres

Fabric

- 600 denier nylon



Classic Sports Bag

Available Colours

- Black/Red
- Maroon/White
- Navy/White, Black
- Black/Yellow
- Black/Royal

Size

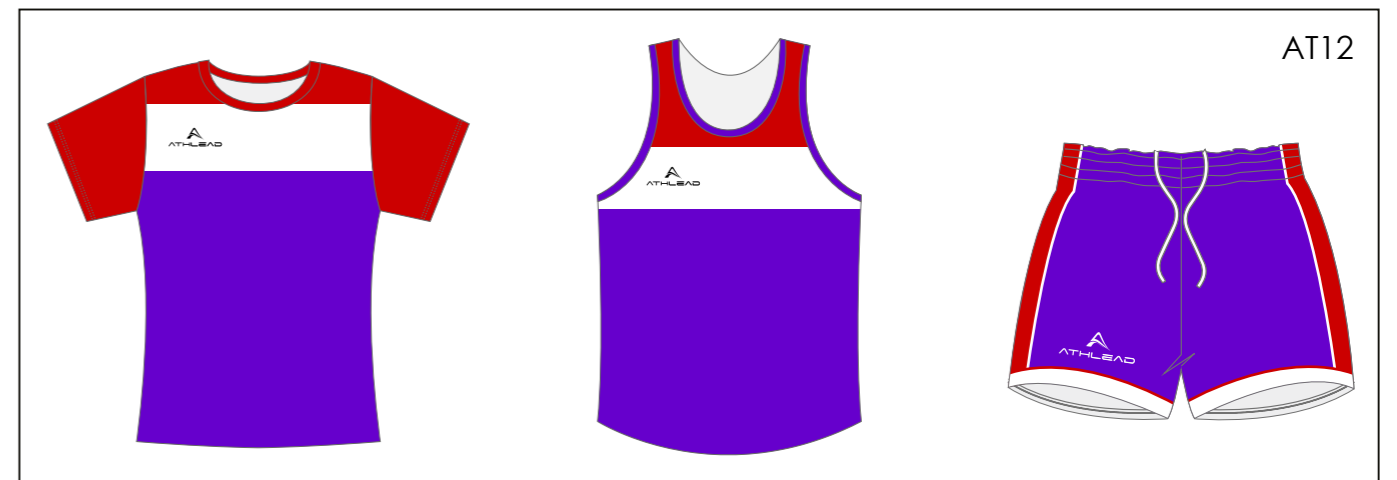
- 60cm (W) x 33cm (H) x 27cm (D)
- 53 litres

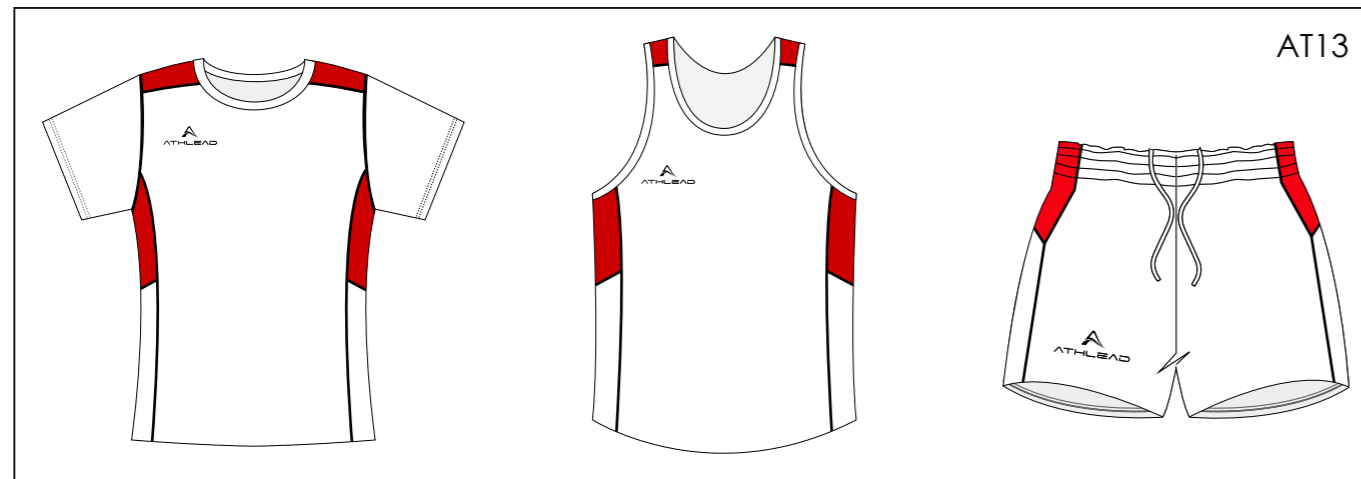
Fabric

- 600 denier nylon

DESIGN TEMPLATES



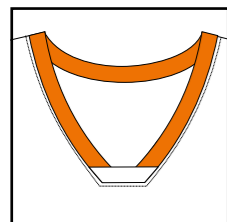




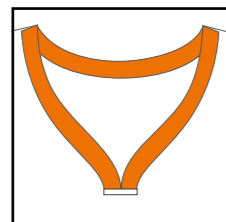
i Couldn't find the design you were after? Please feel free to contact us and our team will then prepare custom designs for your approval.

EMBELLISHMENTS

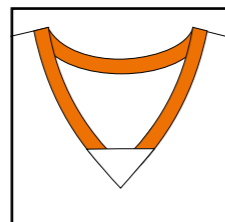
COLLAR TYPES



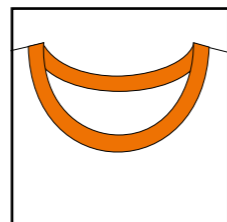
COLLAR #1



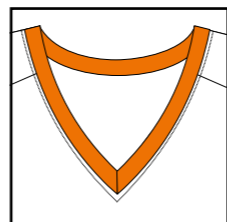
COLLAR #2



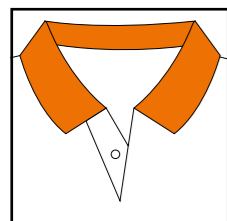
COLLAR #3



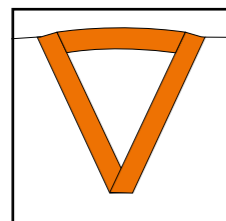
COLLAR #4



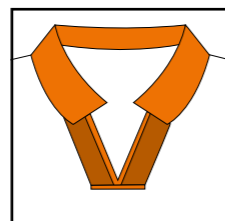
COLLAR #5



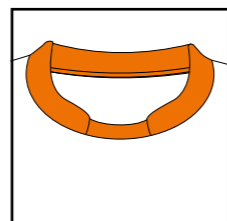
COLLAR #6



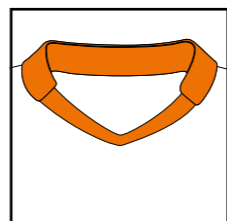
COLLAR #7



COLLAR #8



COLLAR #9



COLLAR #10

NAME



TOP



BOTTOM

NUMBERING



25 25

Impact

25 25

College

25 25

Curve

25 25

Athletic

25 25

Clean

25 25

Square



ARCHED



WITH NUMBER

LOGOS

Front - Left Chest



Front - Right Chest



Front - Stomach



Side - Left Sleeve



Side - Right Sleeve



Back - Top



Back - Bottom



Front - Left Thigh



Front - Right Thigh



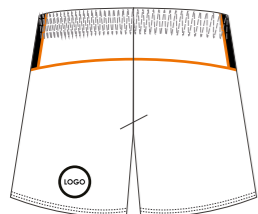
Side - Left Thigh



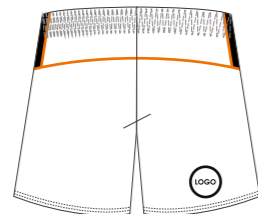
Side - Right Thigh



Back - Left Thigh



Back - Right Thigh



ATHLEAD LOGO

Front - Left Chest



Front - Right Chest



Front - Centre Neck



Back - Top



Side - Left Sleeve



Side - Right Sleeve



Front - Left Shoulder



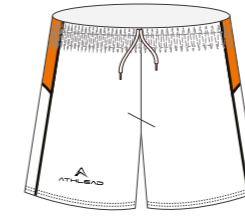
Front - Right Shoulder



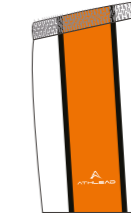
Front - Left Thigh



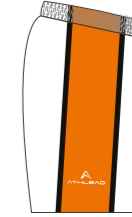
Front - Right Thigh



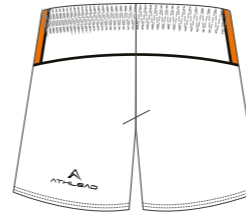
Side - Left Thigh



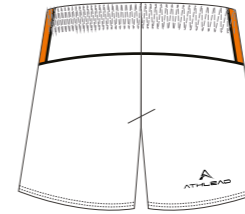
Side - Right Thigh



Back - Left Thigh



Back - Right Thigh



CUTS

SHIRTS, JACKETS, AND HOODIES

Fitted



Raglan



Razer

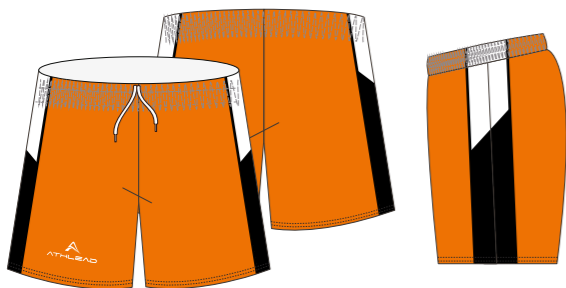


Straight

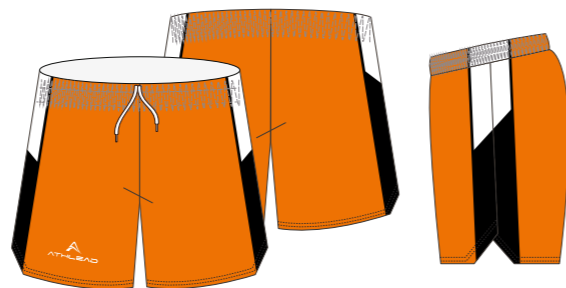


ATHLETIC SHORTS

Standard



Elite



TEMPLATE ALTERATIONS

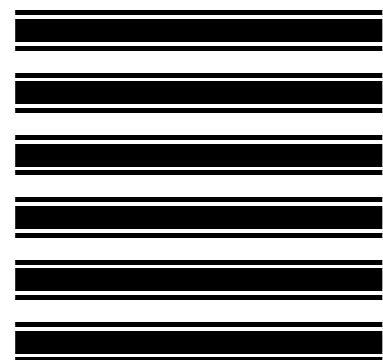
PATTERN INTEGRATION

Select a template



AT02

Provide a pattern



TEMPLATE COMBINATION

Combine features from different templates



AT10



AT11



SUBLIMATED FABRIC SWATCH

INTERLOCK

150 GSM
100% Polyester
Suitable for T-shirt/Polo shirt/
Singlet/Shorts

INTERLOCK

260 GSM
100% Polyester
Suitable for AFL/Rugby

INTERLOCK BRUSHED BACK

210 GSM
100% Polyester
Suitable for Hoodie/Zip-up hoodie/
Tracksuit

INTERLOCK BRUSHED BACK

320 GSM
100% Polyester
Suitable for Hoodie/Zip-up hoodie/
Jacket/Pants

SOFTSHELL

280 GSM
100% Polyester
Keep warm, primarily used Softshell
jacket

TAFFETA

100% Polyester
Waterproof. Primarily used for
Lightweight jacket

MICROFIBRE

130 GSM
100% Polyester
Suitable for Tracksuit

MICROMESH

165 GSM
100% Polyester
Suitable for T-shirt/Polo shirt/Singlet/
Shorts/Basketball/Cycling/Cricket/
Netball dress

MINI WAFFLE

150 GSM
100% Polyester
Suitable for T-shirt/Polo shirt/Singlet/
Shorts/Basketball/Cycling

MINI WAFFLE

160 GSM
100% Polyester
Suitable for T-shirt/Polo shirt/Singlet/
Shorts/Basketball/Cycling/Cricket/
Netball dress

MINI WAFFLE KNIT

145 GSM
100% Polyester
Suitable for T-shirt/Polo shirt/Singlet/
Shorts/Basketball/Soccer/
Cycling/Cricket/Netball dress

BIRDSEYE MESH

135 GSM
92% Polyester 8% Elastane
Suitable for T-shirt/Polo shirt/Singlet/
Shorts/Reversible basketball singlet

POLYESTER DIAMOND KNIT

135 GSM
100% Polyester
Suitable for T-shirt/Polo shirt/Golf
polo/Singlet

POLYESTER STRIP KNIT

150 GSM
100% Polyester
Suitable for T-shirt/Polo shirt/Singlet/
Shorts/Basketball/Soccer/Cycling/
Cricket/Netball dress

POLY/ESTANE AIR MESH

180 GSM
92% Polyester 8% Elastane
Suitable for T-shirt/Polo shirt/Singlet/
Shorts/Soccer/Basketball

POLY/ESTANE

240 GSM
88% Polyester 12% Elastane
Suitable for Leggings/Cycling

POLY/SPANDEX JERSEY

200 GSM
88% Polyester 12% Spandex
Suitable for T-shirt/Golf polo/Singlet/
Shorts

POLY/SPANDEX JERSEY

240 GSM
80% Polyester 20% Spandex
Suitable for Leggings/Cycling suits

POLY/SPANDEX JERSEY

270 GSM
88% Polyester 12% Spandex
Suitable for Netball dress/Skirts/Skort

CUT AND SEW

POLAR FLEECE

300 GSM

100% Polyester

Keep warm. Primarily used for cut and sew Jacket/Pants/Vest

POLYESTER EYELET

160 GSM

100% Polyester

Cool to wear, quick to dry. Primarily used for cut and sew T-shirt/Singlet/Shorts/Polo shirt

FLEECY

320 GSM

65% Polyester 35% Cotton

Keep warm. Primarily used for cut and sew Sweatshirt/Sweatpants/Varsity jacket/Hoodie/Zip-up hoodie

TASLON

100 GSM

100% Nylon

Waterproof. Primarily used for cut and sew Weather jacket/Pants

MICROFIBRE

100 GSM

100% Polyester

Waterproof. Primarily used for cut and sew Sport jacket/Sport pants/Shorts

AEROMESH

100 GSM

65% Polyester 35% Cotton

Cool to wear. Primarily used for cut and sew T-shirt/Singlet/Shorts/Polo shirt

SIZE GUIDE

ATHLETIC SINGLETS

| Mens | XS | S | M | L | XL | 2XL | 3XL | 4XL | 5XL |
|--------------------|----|------|----|------|----|------|-----|------|-----|
| Chest | 47 | 49.5 | 52 | 54.5 | 57 | 59.5 | 62 | 64.5 | 67 |
| Body Length | 72 | 74 | 76 | 78 | 80 | 82 | 84 | 85 | 86 |

| Womens | 6 | 8 | 10 | 12 | 14 | 16 | 18 | 20 | 22 |
|--------------------|------|------|------|------|------|------|------|------|------|
| Chest | 38.5 | 41 | 43.5 | 46 | 48.5 | 51 | 53.5 | 56.5 | 59.5 |
| Body Length | 55.5 | 57.5 | 59.5 | 61.5 | 63.5 | 65.5 | 67.5 | 69.5 | 71.5 |

SPORTS TOPS

| Mens | XS | S | M | L | XL | 2XL | 3XL | 4XL | 5XL |
|--------------------|------|----|------|----|------|-----|-----|------|-----|
| Chest | 50.5 | 53 | 55.5 | 58 | 60.5 | 63 | 68 | 70.5 | 73 |
| Body Length | 67 | 69 | 71 | 73 | 75 | 77 | 79 | 80 | 81 |

| Womens | 6 | 8 | 10 | 12 | 14 | 16 | 18 | 20 | 22 |
|--------------------|------|----|------|----|------|----|------|----|------|
| Chest | 42.5 | 45 | 47.5 | 50 | 52.5 | 55 | 57.5 | 60 | 64.5 |
| Body Length | 59 | 61 | 63 | 65 | 67 | 69 | 71 | 72 | 73 |

| Kids | 4 | 6 | 8 | 10 | 12 | 14 | 16 |
|--------------------|----|----|----|----|----|----|----|
| Chest | 36 | 38 | 40 | 42 | 44 | 46 | 49 |
| Body Length | 49 | 52 | 55 | 58 | 61 | 64 | 67 |

FOOTY SHORTS

| Mens | XS | S | M | L | XL | 2XL | 3XL | 4XL | 5XL |
|-----------------------|----|----|----|----|----|-----|-----|-----|-----|
| Waist Relaxed | 29 | 31 | 34 | 37 | 39 | 42 | 44 | 46 | 48 |
| Outside Length | 32 | 33 | 34 | 35 | 36 | 37 | 38 | 39 | 40 |

| Kids | 4 | 6 | 8 | 10 | 12 | 14 | 16 |
|-----------------------|----|----|----|----|----|----|----|
| Waist Relaxed | 20 | 22 | 24 | 26 | 28 | 30 | 32 |
| Outside Length | 24 | 25 | 26 | 27 | 28 | 29 | 31 |

SPORT SHORTS

| Mens | XS | S | M | L | XL | 2XL | 3XL | 4XL | 5XL |
|-----------------------|------|-----|------|-----|------|-----|------|-----|------|
| Waist Relaxed | 31.5 | 34 | 36.5 | 39 | 41.5 | 44 | 46.5 | 49 | 51.5 |
| Waist Band | 3.5 | 3.5 | 3.5 | 3.5 | 3.5 | 3.5 | 3.5 | 3.5 | 3.5 |
| Outside Length | 50 | 51 | 52 | 53 | 54 | 55 | 56 | 57 | 58 |

| Womens | 6 | 8 | 10 | 12 | 14 | 16 | 18 | 20 | 22 |
|-----------------------|------|------|------|------|------|------|------|------|------|
| Waist Relaxed | 28 | 30.5 | 33 | 35.5 | 38 | 40.5 | 43 | 45.5 | 51.5 |
| Waist Band | 4 | 4 | 4 | 4 | 4 | 4 | 4 | 4 | 3.5 |
| Outside Length | 38.5 | 39.5 | 40.5 | 41.5 | 42.5 | 43.5 | 44.5 | 45.5 | 58 |

| Kids | 4 | 6 | 8 | 10 | 12 | 14 | 16 |
|-----------------------|------|------|------|------|------|------|------|
| Waist Relaxed | 22.5 | 24.5 | 26.5 | 28.5 | 30.5 | 32.5 | 34.5 |
| Waist Band | 4 | 4 | 4 | 4 | 4 | 4 | 4 |
| Outside Length | 33 | 35 | 37 | 39 | 41 | 43 | 45 |

TIGHTS (LONG)

| Mens | XS | S | M | L | XL | 2XL | 3XL | 4XL | 5XL |
|--------|------|----|------|----|------|-----|-----|-------|-----|
| Waist | 71 | 74 | 77 | 80 | 83 | 86 | 89 | 92 | 95 |
| Hips | 77 | 80 | 83 | 86 | 89 | 92 | 95 | 98 | 101 |
| Length | 91.5 | 93 | 94.5 | 96 | 97.5 | 99 | 101 | 102.5 | 104 |

| Womens | 4 | 6 | 8 | 10 | 12 |
|--------|------|----|----|----|----|
| Waist | 54 | 58 | 60 | 62 | 65 |
| Hips | 58 | 62 | 65 | 67 | 70 |
| Length | 36.5 | 60 | 65 | 75 | 82 |

TIGHTS (SHORT)

| Womens | 4 | 6 | 8 | 10 | 12 | 14 | 16 | 18 | 20 |
|--------|------|------|------|------|------|------|------|------|------|
| Waist | 28 | 30 | 32 | 34 | 36 | 38 | 40 | 42 | 44 |
| Length | 24.5 | 26.5 | 28.5 | 30.5 | 32.5 | 34.5 | 36.5 | 38.5 | 40.5 |

OFF FIELD TANK TOP

| Mens | XS | S | M | L | XL | 2XL | 3XL |
|------------|------|----|------|----|------|-----|------|
| Half Chest | 49.5 | 52 | 54.5 | 57 | 59.5 | 62 | 64.5 |

| Womens | 8 | 10 | 12 | 14 | 16 | 18 | 20 |
|------------|----|----|----|----|------|----|------|
| Half Chest | 47 | 49 | 51 | 53 | 55.5 | 58 | 60.5 |

POLO SHIRT

| Mens | XS | S | M | L | XL | 2XL | 3XL | 4XL | 5XL |
|-------------|------|----|------|----|------|-----|-----|------|-----|
| Chest | 50.5 | 53 | 55.5 | 58 | 60.5 | 63 | 68 | 70.5 | 73 |
| Body Length | 67 | 69 | 71 | 73 | 75 | 77 | 79 | 80 | 81 |

| Womens | 6 | 8 | 10 | 12 | 14 | 16 | 18 | 20 | 22 |
|-------------|------|----|------|----|------|----|------|----|------|
| Chest | 42.5 | 45 | 47.5 | 50 | 52.5 | 55 | 57.5 | 60 | 64.5 |
| Body Length | 59 | 61 | 63 | 65 | 67 | 69 | 71 | 72 | 73 |

| Kids | 2 | 4 | 6 | 8 | 10 | 12 | 14 | 16 | 18 |
|-------------|----|----|----|----|----|----|----|----|----|
| Chest | 34 | 36 | 38 | 40 | 42 | 44 | 46 | 49 | 52 |
| Body Length | 46 | 49 | 52 | 55 | 58 | 61 | 64 | 67 | 69 |

HOODIES

| Mens | XS | S | M | L | XL | 2XL | 3XL | 4XL | 5XL |
|----------------------|------|------|------|------|------|------|------|------|-----|
| Shoulder to Shoulder | 47 | 48.5 | 50.5 | 52.5 | 54.5 | 56.5 | 60.5 | 63.5 | 66 |
| Chest | 54.5 | 56 | 58.5 | 61 | 63.5 | 66 | 71 | 73.5 | 76 |
| Front Length | 69 | 73 | 75 | 77 | 79 | 81 | 83 | 87 | 91 |
| Sleeve Length | 66 | 69 | 70 | 71 | 72 | 73 | 74 | 75 | 76 |

| Kids | 6 | 8 | 10 | 12 | 14 | 16 |
|----------------------|----|----|----|----|----|----|
| Shoulder to Shoulder | 36 | 38 | 40 | 42 | 44 | 46 |
| Chest | 43 | 45 | 47 | 49 | 51 | 53 |
| Front Length | 55 | 57 | 60 | 62 | 64 | 66 |
| Sleeve Length | 48 | 50 | 52 | 54 | 56 | 58 |

JACKETS

| Mens | XS | S | M | L | XL | 2XL | 3XL | 4XL | 5XL |
|---------------|----|----|----|----|----|-----|-----|-----|------|
| Chest | 58 | 60 | 62 | 64 | 66 | 68 | 70 | 74 | 51.5 |
| Body Length | 72 | 74 | 76 | 78 | 80 | 82 | 84 | 88 | 3.5 |
| Sleeve Length | 61 | 62 | 63 | 64 | 65 | 66 | 67 | 68 | 58 |

| Kids | 4 | 6 | 8 | 10 | 12 | 14 | 16 |
|---------------|------|------|------|------|------|------|------|
| Chest | 42 | 45 | 48 | 51 | 54 | 57 | 60 |
| Body Length | 47 | 51 | 55 | 59 | 63 | 67 | 71 |
| Sleeve Length | 41.5 | 43.5 | 45.5 | 47.5 | 49.5 | 51.5 | 53.5 |

TRACKSUIT PANTS

| Mens | XS | S | M | L | XL | 2XL | 3XL |
|----------------|-----|------|-----|------|-----|------|-----|
| Waist Relaxed | 34 | 35.5 | 37 | 38.5 | 40 | 42.5 | 45 |
| Waist Band | 4 | 4 | 4 | 4 | 4 | 4 | 4 |
| Outside Length | 100 | 103 | 106 | 109 | 112 | 115 | 118 |

| Kids | 4 | 6 | 8 | 10 | 12 | 14 | 16 |
|---------------|-----|-----|-----|-----|-----|-----|-----|
| Chest | 24 | 26 | 28 | 30 | 32 | 34 | 36 |
| Body Length | 3.5 | 3.5 | 3.5 | 3.5 | 3.5 | 3.5 | 3.5 |
| Sleeve Length | 70 | 75 | 80 | 85 | 90 | 95 | 100 |

TAPERED TRACK PANTS

| Unisex | 3XS | 2XS | XS | S | M | L | XL | 2XL | 3XL |
|---------------|------|-----|------|-----|------|-----|------|-----|------|
| Waist Relaxed | 26.5 | 29 | 31.5 | 34 | 36.5 | 39 | 41.5 | 44 | 46.5 |
| Side Length | 103 | 105 | 107 | 109 | 111 | 113 | 115 | 117 | 119 |



FOR THE
SPORTS LEADER



@athleadau

ATHLEAD.COM.AU